

Uttar Pradesh CAMPA

Annual Report

2020-21



**Uttar Pradesh
Compensatory Afforestation Fund Management
and Planning Authority
(UP CAMPA)**



Badaun Forest Division, Non-CA Advance Soil Work

Prepared under Guidance of :

- ***Smt. Mamta Sanjeev Dubey, IFS***
Principal Chief Conservator of Forests (HoFF), Uttar Pradesh
& Chairperson, Executive Committee, UP CAMPA, Lucknow.
- ***Shri Sanjay Shrivastava, IFS***
Principal Chief Conservator of Forests / Chief Executive Officer (CEO),
UP CAMPA, Lucknow.

Prepared by :

- ***Dr. Gaurav Varshney,***
Chief Statistical Officer / Deputy Director (Stats.),
UP CAMPA, Lucknow.
- ***Shri Saroj Prakash,***
Additional Statistical Officer ,
UP CAMPA, Lucknow.

Supported by :

- ***Shri Rohit Kumar,*** Clerk cum Computer Operator, UP CAMPA, Lucknow.
- ***Shri Dileep Kumar Dubey,*** Clerk cum Computer Operator, UP CAMPA, Lucknow.
- ***Shri Ravish Kumar Tiwari,*** Clerk cum Computer Operator, UP CAMPA, Lucknow.



Office of the Principal Chief Conservator of Forests (HoFF),
Aranya Bhawan, 17 Rana Pratap Marg,
Uttar Pradesh, Lucknow-226001
Telephone No. 0522-2206168
Email-pccf-up@nic.in

Mamta Sanjeev Dubey, IFS

Principal Chief Conservator of Forests (HoFF), Uttar Pradesh
& Chairperson, Executive Committee, UP CAMPA




Message

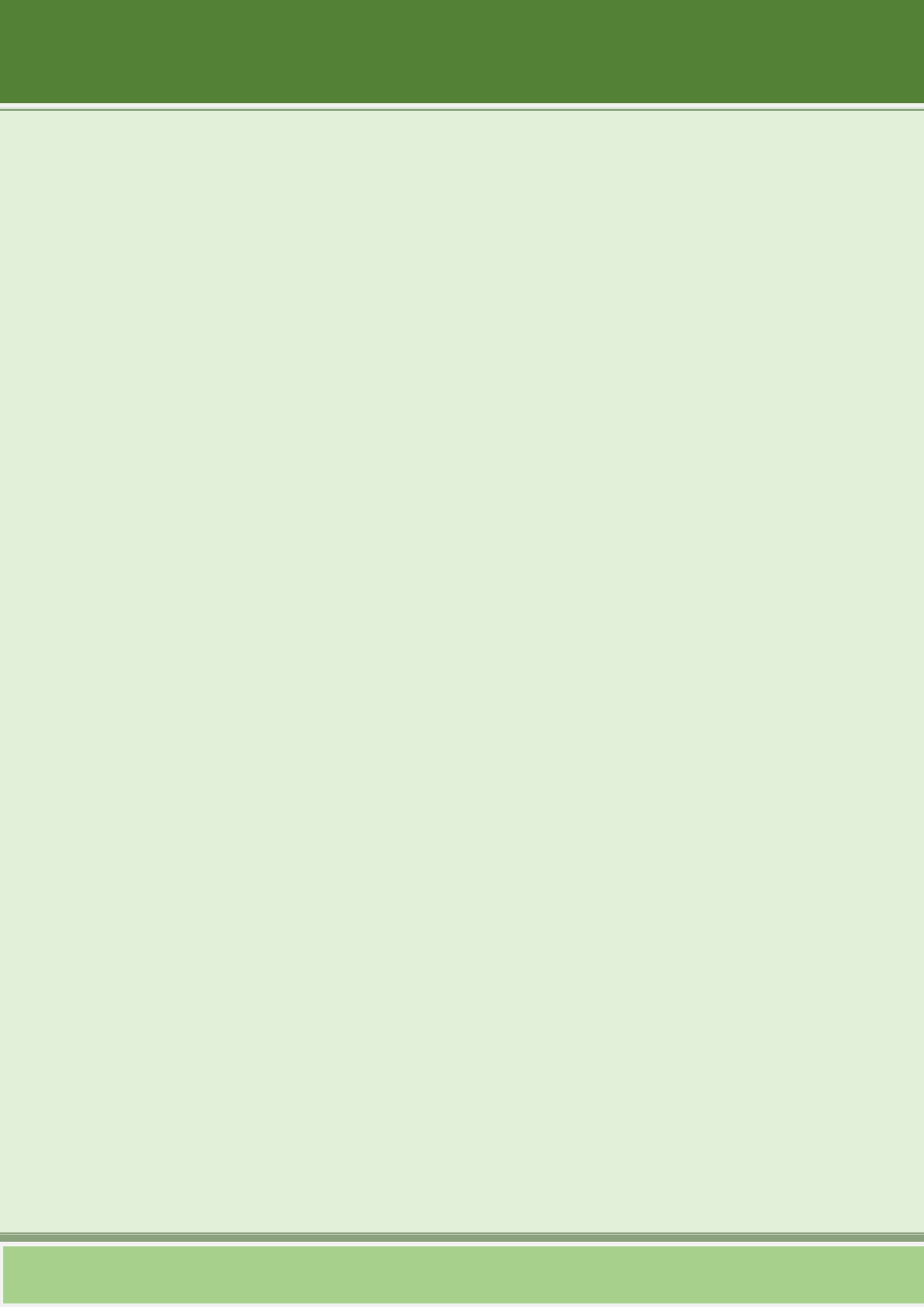
I am pleased to present before you the Annual Report of Uttar Pradesh Compensatory Afforestation Fund Management & Planning Authority (UP CAMPA) for the Financial Year 2020-21.

During the year, 2020-21, the implementation of mandated site-specific activities of Compensatory Afforestation fulfilling conditions in cases of forest land transfer along with activities pertaining to protection of forests & wildlife under the component of NPV were carried out successfully. Activities like Artificial Regeneration (Non-CA Plantation-Plantation Under NPV) in degraded forest using latest information technology tools for effective planning, implementation and monitoring (PMS-Plantation Monitoring System & NMS-Nursery Monitoring System), Assisted Natural Regeneration (ANR) for improving the natural regeneration of forest, Soil and Moisture Conservation Work in forests (SMC) using GIS Technology (Ridge to Valley Approach), protection of plantation and forests, Improvement of Wildlife Habitat and activities to reduce Man Animal Conflict, Construction of Residential Buildings for Frontline staff living in remote forest areas, etc. were under taken under NPV component by U.P. CAMPA. I am happy to convey that UP CAMPA is performing as per Acts & Guidelines.

I appreciate the efforts put in by UP CAMPA, towards discharge of its responsibilities, including successful management of the fund and its utilization for implementation of activities of Annual Plan of Operation of 2020-21 as per approval of Executive Committee of National CAMPA.

Place : Lucknow


(Mamta Sanjeev Dubey)





Office of the Principal Chief Conservator of Forests (HoFF),
Aranya Bhawan, 17 Rana Pratap Marg,
Uttar Pradesh, Lucknow-226001
Telephone No. 0522-2204365
Email- ccfcampa-up@nic.in

Sanjay Shrivastava, IFS

Principal Chief Conservator of Forests/Chief Executive Officer (CEO),
Uttar Pradesh CAMPA, Lucknow.



Preface

The Annual Report of year 2020-21 has been prepared by, UPCAMPA, as per provisions of CAF Rules 2018. The Report presents, the brief description of different activities, undertaken by various working units of Forest Department, under APO for year 2020-21, finally approved by Executive Committee of National Authority, Government of India.

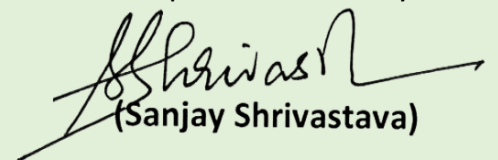
In year 2020-21, the Annual Plan of Operation with total Outlay of Rs. 27500.00 lakhs was compiled by Executive Committee of UP CAMPA, which, after approval/ recommendation of Steering Committee of UP CAMPA, was sent to Executive Committee of National Authority. Under special conditions of Covid-19, the Government of India, announced the Economic Package and in compliance of instructions, an Additional Annual Plan of Operation, with total Outlay of Rs. 34200.82 lakhs was compiled by Executive Committee of UP CAMPA. After approval/ recommendation of Steering Committee of UP CAMPA, it was sent to Executive Committee of National Authority

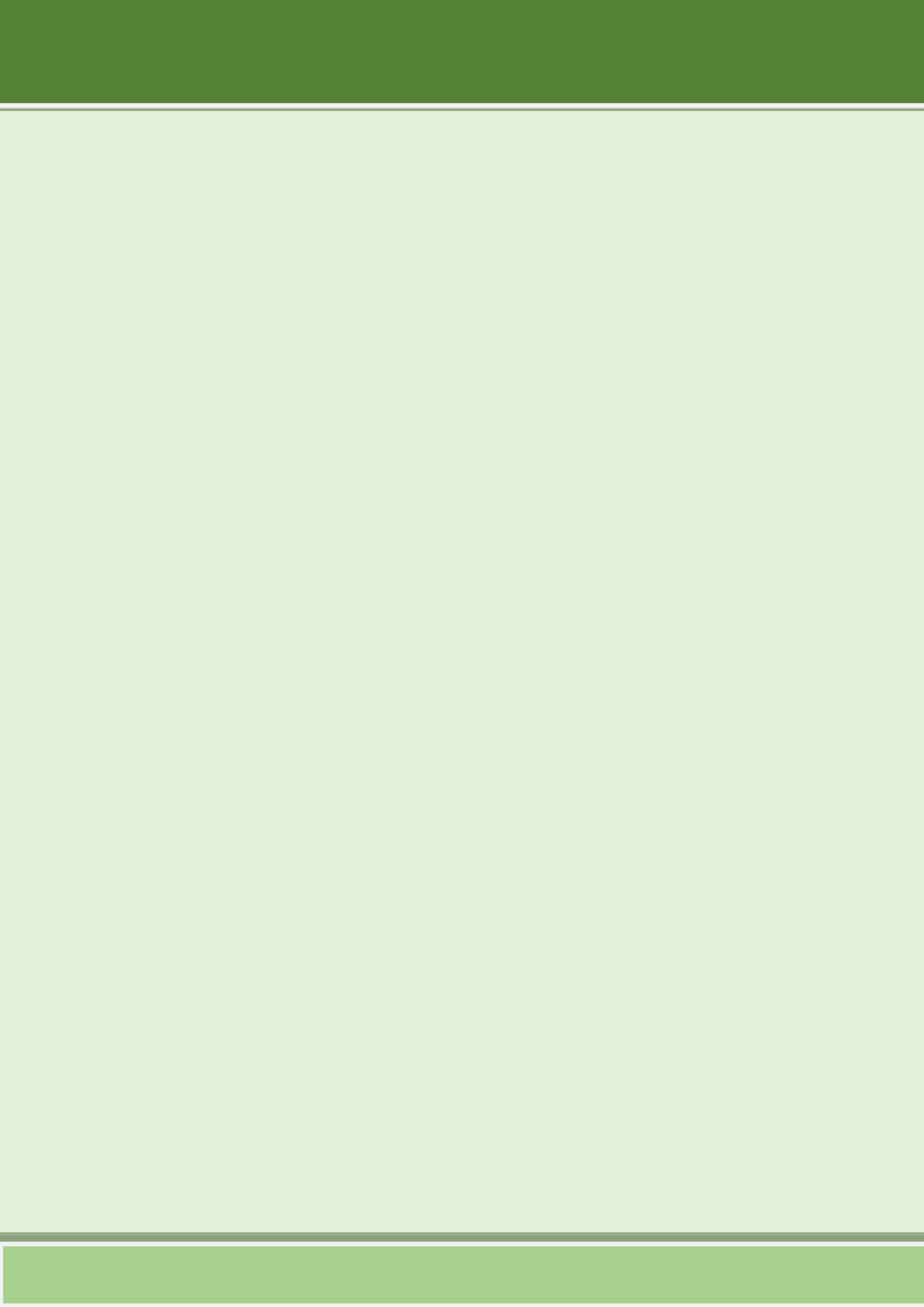
The Executive Committee of National Authority , accorded final approval, to APO 2020-21, for an amount of Rs 27200.00 lakh which included Rs 2949.66 for activities under compensatory afforestation (CA), Rs 23917.34 lakh for Net Present Value (NPV) activities and Rs 333.00 lakhs for activities under accrued interest component.

It is our privilege to present the Annual Report for 2020-21 which gives, the brief description of various activities undertaken by UPCAMPA, as per approved APO for year 2021-21. The various activities, implemented in field, are presented in form of description, tables, graphs and chart along with photograph of some works.

I request you to go through the information, presented in this report and offer your valuable suggestions so that we incorporate them in future.

Place : Lucknow


(Sanjay Shrivastava)



CONTENTS

S. NO.	PARTICULARS	PAGE NO.
1	Executive Summary	1
	PART-I	
	CHAPTER-1 (UP FOREST)	
1.1	Introduction	5
1.2	Forest Scenario in Uttar Pradesh	6
1.3	Forest Cover	6
1.4	Forestry Sector of Uttar Pradesh	7
	CHAPTER-2 (BRIEF DESCRIPTION ABOUT CAMPA)	
2.1	Background	9
2.2	Compensatory Afforestation Fund Act – 2016 (CAF ACT, 2016)	10
2.3	Compensatory Afforestation Fund Rules, 2018 (CAF Rules, 2018)	12
	CHAPTER-3 (BRIEF DESCRIPTION ABOUT UP CAMPA)	
3.1	Background	17
3.2	Committees under Uttar Pradesh CAMPA	17
3.2.1	The Governing Body	18
3.2.2	The Steering Committee	18
3.2.3	The Executive Committee	20
3.3	Meetings of the Committees	21
3.4	Transfer of Funds	23
	PART-II	
	CHAPTER-4 (ANNUAL PLAN OF OPERATION (APO))	
4.1	Introduction	25
4.2	Annual Plan of Operation (APO) for 2020-21	26
4.3	Annual Plan of Operation (APO) for 2020-21 (Additional)	26
4.4	Important features of the APO 2020-21	29
	CHAPTER-5 (PROGRESS REPORT OF ANNUAL PLAN OF OPERATION 2020-21)	
5.0	Physical & Financial Progress	31
5.1	Compensatory Afforestation (CA)	32
5.2	Artificial Regeneration (Non-CA Plantation)	33
5.3	ANR related works	34
5.4	Soil & Moisture Conservation Works	34
5.5	Protection of Plantations and Forests	34
5.6	Forest fire prevention and control operations	34
5.7	Improvement of Wildlife Habitat	35
5.8	Bio-diversity Conservation	35
5.9	Construction of Residential and Official Buildings	35
5.10	Establishment, up-gradation and Maintenance of Modern Nurseries and other planting stock production facilities for production of quality planting material	36
5.11	Other Components (IT, Forest Certification & Publicity cum Awareness Pro.)	36

S. NO.	PARTICULARS	PAGE NO.
	PART-III	
	CHAPTER-6 (GLIMPSES OF WORKS CARRIED OUT UNDER UP CAMPA)	
6.1	CA Plantation	37
6.2	Non-CA Plantation	41
6.3	Advance Soil Work	45
6.4	ANR Works	47
6.5	Soil and Moisture Conservation Works	48
6.6	Construction of Residential and Official Buildings	52
6.7	Habitat Improvement Work in Saman Sanctuary	55
6.8	Forest Fire Prevention and Control Operations	60
6.9	Man-animal Conflict Reduction	62
6.10	Improvement of Wildlife Habitat	64
6.11	Organizing Important Days And Spreading Environmental Education Among School Children	68
6.12	Immunization/Vaccination Of Cattle Around Wildlife Sanctuaries/Bird Sanctuaries/ National Park	69
6.13	Training	70
6.14	Software Developed by IT	71
	PART-IV	
	CHAPTER-7 (MONITORING MECHANISM)	
7.1	Concurrent Monitoring & Evaluation	73
7.1.1	Monitoring by supervisory officers of field & senior Forest officers	73
7.1.2	Regular counting & monitoring of survival of plants in plantation	73
7.1.3	Independent Monitoring and Evaluation by Monitoring and Evaluation wing of State Forest Department	73
7.1.4	Online Monitoring System	76
7.2	Third Party Monitoring	76
7.2.1	NABARD consultancy services Pvt. Ltd.	76
7.2.2	Forest Survey of India, Dehradun	78
7.2.3	Central Agro Forestry Research Institute, Jhansi, Uttar Pradesh	79
7.2.4	Future strategy for third party monitoring and evaluation of works done under CAMPA	79
7.2.5	Accounts & Audit	80

ANNEXURES

ANNEXURE	PARTICULARS (COMPONENT WISE / DIVISION WISE PHYSICAL & FINANCIAL PROGRESS)	PAGE NO.
1	CA Plantation - Rainy Season 2020	81
2	CA Advance Soil Work - Rainy Season 2021	82
3	Maintenance of CA Plantation during Year 2020-21	83
4	Artificial Regeneration (Non-CA Plantation) - Rainy Season 2020	86
5	Advance Soil Work for Non-CA Plantation - Year 2021	88
6	Artificial Regeneration (Non-CA Maintenance)	90
7	ANR Related Works	92
8	Soil and Moisture Conservation	93
9	Survey Demarcation and Establishment of Boundary Pillars	94
10	Strengthening of Forest Roads	95
11	Enforcement Work	96
12	Installation and Purchase of Solar Lights/Solar Lamp/Solar Torches In Office/ Residential/Rest House Premises	98
13	Capacity Building of Frontline Staff for The Protection of Forests And Plantation	101
14	Purchase of State of Art Fire Protection/Management Equipments	102
15	Construction of Watch Tower	104
16	Maintenance of Watch Tower	105
17	Man-Animal Conflict	106
18	Development of Dudhwa, Amangarh and Pilibhit Tiger Reserve	108
19	Development / Maintenance of Katarniaghat, Sohagibarwa, Sohelwa, Kaimoor, Kashi, Kachhuwa, Chambal and Other Wild Life Sanctuary	109
20	Establishment of Anti-Poaching Surveillance and Wildlife Tracking System in Dudhwa Tiger Reserve	110
21	Development of Bird Sanctuary	111
22	Wildlife Conservation and Protection	112
23	Immunization/Vaccination of Cattle around Wildlife Sanctuaries/Bird Sanctuaries/National Park	113
24	Development of Wetlands	114

ANNEXURE	PARTICULARS (COMPONENT WISE / DIVISION WISE PHYSICAL & FINANCIAL PROGRESS)	PAGE NO.
25	Conservation of Vulture, Ganges Dolphin, Kacchhua (Tortoise/Turtle) And Other Important Species	115
26	Construction of Type-1, Type-2 & Type-3 Quarters for Frontline Staff	116
27	Establishment of Nurseries at Divisions Level	117
28	Strengthening of Research Centre for Production of Quality Planting Material	118
29	Purchase and Maintenance of Equipments/Devices for Communication and Information Technology for The Purposes of Protection of Forest And Wildlife	119
30	Forest Certification and Development of Certification Standards	120
31	Publicity-cum-Awareness Program on the Various Schemes being Implemented from State Fund	121

**EXECUTIVE SUMMARY**

The **Annual Report of year 2020-21** has been prepared by, Uttar Pradesh State Compensatory Afforestation Fund Management and Planning Authority, as per provisions of CAF Rules, 2018. The Report presents the brief description of various activities undertaken by UPCAMPA, under APO for year 2021-21, compiled by Executive Committee of UP CAMPA, approved/ recommended by Steering Committee of UP CAMPA chaired by the Chief Secretary, Uttar Pradesh, sent to office of the CEO, National CAMPA, New Delhi for presenting before Executive Committee of National Authority and finally approved by Executive Committee of National Authority chaired by Director General and Special Secretary MoEF and CC, Government of India.

APO 2020-21

Initially, the Annual Plan of Operation for 2020-21 with total Outlay of Rs. 27500.00 Lacs was compiled by Executive Committee of UP CAMPA in its 2nd meeting held on 16.03.2020. The Steering Committee of UP CAMPA under the Chairmanship of Chief Secretary, examined the proposal for APO 2020-21 and approved the APO for 2020-21 with a total Outlay of Rs. 27500.00 Lacs in its 2nd meeting held on 15.05.2020

Under special conditions of Covid-19, the Government of India, announced the Economic Package and Hon Chief Minister U.P reviewed the situation in a meeting held on 15-05-2020. In compliance of instructions issued, after the meeting, by the Chief Secretary, Govt. of Uttar Pradesh, vide letter no. 345/PSMS/2020 dated 16.05.2020, an Additional Annual Plan of Operation was formulated for carrying out such forestry related activities which are highly labour intensive.

The Annual Plan of Operation for 2020-21 (Additional) with total Outlay of Rs. 34200.82 Lacs was compiled by Executive Committee of UP CAMPA in its 3rd meeting held on 26.05.2020. The Steering Committee of UP CAMPA under the Chairmanship of Chief Secretary, examined the proposal for APO 2020-21 (Additional) and approved the APO for 2020-21 (Additional) with a total Outlay of Rs. 34200.00 Lacs, in its 3rd meeting, conducted by circulation

The above two APOs were discussed in 6th, 7th, 8th & 9th Meeting of the Executive Committee, National CAMPA held on 27-28th May, 2020, 30th June, 2020, 25th Aug, 2020 & 12th Jan, 2021 respectively and finally approved

The approved APO 2020-21 focussed on mandated site specific activities of Compensatory Afforestation laid down in sanctioned forest land transfer proposals, by Govt. of India along with various activities under Net Present Value (NPV) component. The approved Net Present Value (NPV) Activities included Artificial Regeneration (Non-CA Plantation-Plantation Under NPV) in degraded forest, Assisted Natural Regeneration (ANR) for improving the natural regeneration of forest, Soil and Moisture Conservation Work in forests (SMC), protection of plantation and forests, forest fire prevention and control operations, establishment up gradation and maintenance of modern nurseries, Improvement of Wildlife Habitat and activities to reduce Man Animal Conflict, Construction of Residential Buildings for Frontline staff living in remote forest areas, etc.

The Executive Committee of National Authority chaired by Director General and Special Secretary MoEF and CC, Government of India accorded final approval, to APO 2020-21, for an amount of Rs 27200.00 lacs which included Rs 2949.66 lacs for activities under Compensatory Afforestation (CA), Rs 23917.34 lacs for Net Present Value (NPV) activities and Rs 333.00 lacs for activities under accrued interest component. Against, the approved APO 2020-21 for Rs 27200.00 lacs, Rs 25635.34 lacs were released to different working units and an expenditure of Rs 25218.90 lacs was incurred by various working units. Thus 98.37% of released amount was utilized during financial Year 2020-21.



Major Achievements

During the year 2020-21, the works approved by the Executive Committee of National Authority chaired by Director General and Special Secretary MoEF and CC, Government of India, were executed by various Working Units, as per provisions of rules and regulations, of Forest Department of Uttar Pradesh. The following are key achievement during 2020-21:-

1 Compensatory Afforestation (CA)

The mandated site specific activities of Compensatory Afforestation, laid down in sanctioned forest land transfer proposals, were carried out on 1070.08 ha, as per direction in FC clearance and apart from that 66495 plants were planted at prescribed location as per direction in FC clearance. Also the maintenance work in of CA Plantation from 2011 to 2019 were done and Advance Soil work in 1011.08 ha & 72149 number of plants (other than hectare) were carried out during the year 2020-21

2 Artificial Regeneration (Non-CA Plantation-Plantation under NPV)

Under Net Present Value (NPV) activities, Artificial Regeneration (Non-CA Plantation) in degraded forest using latest information technology tools for effective planning, implementation and monitoring (PMS-Plantation Monitoring System & NMS-Nursery Monitoring System) was carried out in 11574.86 ha during rains of year 2020-21 along with Advance soil work in 21664.95 ha for plantation in rains of year 2021-22

3 Assisted Natural Regeneration and Soil and Moisture conservation Work

Assisted Natural Regeneration (ANR) activities, for improving the natural regeneration of forest, were carried out in 950.00 ha of degraded forest land. The selected sites were surveyed and a detailed Site Specific Plan was prepared for each site by DFO, examined by Conservator and approved by concerned Zonal/Mandaliya Chief Conservator of Forest. The activities like regeneration assessment survey, protection of selected sites by creating protection trenches, removal of shrubs hampering regeneration, removal of fallen leaves and other things around germination area, seed sowing of associate species in blank areas, thinning and pruning of shrubs of associate species, protection from grazing and fire etc were carried out for assisting the Natural Re-generation.

4 Soil and Moisture Conservation Work in forests (SMC)

Soil and Moisture Conservation Work activities were carried out to protect and promote vegetation cover in forest along with improving the water dependent activities of villagers living in forest fringes. The selected sites were surveyed and a detailed Site Specific Plan was prepared for each site by DFO, examined by Conservator and approved by concerned Zonal/Mandaliya Chief Conservator of Forest. Geographical Information System (GIS) based information were used for scientific planning along with community participation of local villagers for identifying potential SMC works and their site identification. Criterion like Site slope, Land use and Land cover, Drainage characteristics, Soil type and soil profile, Catchment area characteristics, Geology, Water level etc were adopted for selection and positioning of SMC work. Tools and maps from Google Earth pro, Bhuvan (depicts map of drainage, water bodies, canal, land use, land cover, wasteland, soil erosion, structural geology, groundwater prospectus, existing NRM assests map), Globber mapper (for contour mapping), Cadastral map, Quantum GIS (QGIS), CLART (Composite Landscape Assessment and Restoration Tool), Note CAM etc were used gathering spatial information.



During year 2020-21, 6343.00 ha area were treated under Soil and moisture works by constructing 467354.00 cubic metre bandhi, 2933.28 cubic metre contour trench/bund, 11365.00 cubic metre Dry checkdams, 18 puccka Checkdams and creating 173791 cubic metre water bodies/talabs etc.

5 Other Activities

Improvement of Wildlife Habitat

An amount of Rs 2394.64 lacs were utilized, for various activities approved by Chief Wildlife Warden U.P, under Improvement of Wildlife Habitat component. Activities like Man-animal conflict reduction, Development of Dudhwa, Amargarh and Pilibhit Tiger Reserve, Development/Maintenance of Katarniaghat, Sohagibarwa, Sohelwa, Kaimoor, Kashi, Kachhua, Chambal and other wildlife sanctuaries, Establishment of Anti-poaching surveillance and wildlife tracking system in Dudhwa Tiger Reserve, Development of bird sanctuaries, Wildlife conservation and protection, Immunization/vaccination of cattle around wildlife sanctuaries/bird sanctuaries/national park were carried out under supervision of Chief Wildlife Warden U.P.

Bio-diversity Conservation

An amount of Rs 344.17 lacs were utilized, for various activities approved by Chief Wildlife Warden U.P, for activities under component of Bio-diversity Conservation. Activities like Development of Wetlands Conservation of vulture, Ganges Dolphin, Kacchhua (Tortoise/ turtle) and other important species were carried out under supervision of Chief Wildlife Warden U.P.

Construction of Residential and Official Buildings

Construction of Type-1, Type-2 & Type-3 quarters for frontline staff living in remote forest areas were taken up under this component. Rs 695.54 lacs were utilised for constructing 43 Type-1, 30 Type-2 & 09 Type-3 quarters for frontline staff of various Division living in remote areas.

Communication and Information Technology

For Purchase and Maintenance of Equipments/ Devices for Communication and Information Technology for the purposes of protection of forest and wildlife an amount of 943.42 lacs were utilized.

The details of above achievements can be found in following pages. The Annual Report of 2020-21 has been prepared using charts, graphs photographs etc. Relevant documents have also been attached as annexures for quick reference.



Agra Forest Division, CA Plantation



Mainpuri Division, Non-CA Plantation



PART - I

CHAPTER-1

UP FOREST

1.1 Introduction

Situated in the northern part of the country, Uttar Pradesh covers an area of 2,40,928 sq.km., which is 7.33% of the geographical area of the country. The State lies between 23°52'N to 31°28'N latitude and 77°30'E to 84°39' E longitude and is bordered by Uttarakhand in the north, Haryana, Delhi & Rajasthan in the west, Madhya Pradesh in the west and south west, Chhattisgarh in the south and Bihar in the East. It has international border with Nepal in the north. The State has three distinct regions namely, the Shiwalik region in the north, Gangetic plains in the central region and Vindhyan hills in the south. Uttar Pradesh has a humid subtropical climate with dry winters. The annual rainfall ranges between 1,000 mm to 1,200 mm and the annual temperature varies from 5°C to 46°C. The State is drained by a number of rivers, which include Ganga, Yamuna, Gomti, Ghagra, Betwa, Chambal and Gandak. There are 71 districts in the State, of which one is a tribal district and there are no hill districts. As per census 2011, Uttar Pradesh has a population of 199.81 million, which is 16.50% of India population. The urban and rural population constitute 22.27% and 77.73% respectively. The Tribal population is 0.57%. The average population density of the State is 829 per sq km, which is more than twice the national average. The 19th Livestock Census of 2012 has reported a total livestock population of 68.71 million.

TABLE-1

Land Use Pattern

Land Use Types	Area (in 000' ha)	Percentage
Geographical Area	24,093	
Reporting area for land utilization	24,170	100.00
Forests	1,671	6.91
Not available for land cultivation	3,607	14.92
Permanent pastures and other grazing lands	66	0.27
Land under misc. tree crops and groves	283	1.17
Culturable wasteland	389	1.61
Fallow land other than current fallows	551	2.28
Current fallows	1,061	4.39
Net area sown	16,542	68.45

Source: Land Use Statistics, Ministry of Agriculture, GOI, (2017-18)



1.2 Forest Scenario in Uttar Pradesh

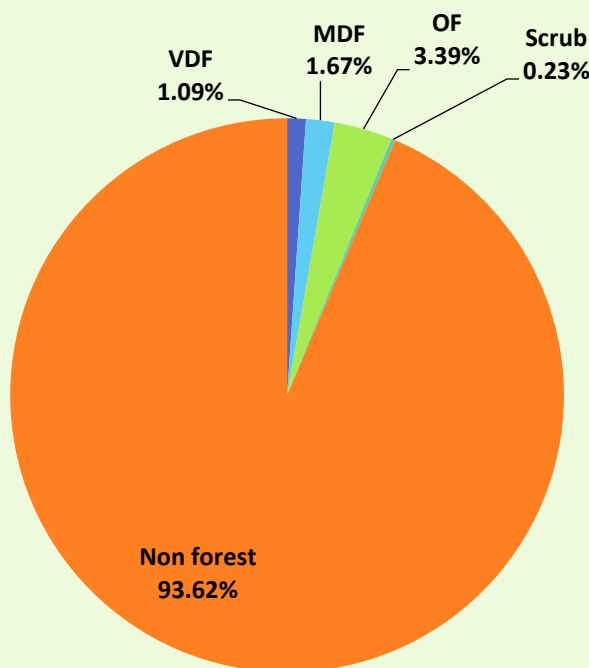
As per the Champion & Seth Classification of Forest Types (1968), the forests in Uttar Pradesh belong to five Forest Type Groups, which are further divided into 28 Forest Types. Major part of the State is agrarian. In recent years, massive plantation programmes have been taken up in the State to increase the forest & tree cover. Through the Nursery Management Scheme, the tall saplings of 8 to 12 feet height are also being raised for planting. During the plantation season of 2021 more than 30 crores saplings were planted across the State. The area of Uttar Pradesh is 240928 Sq.km. out which 17384 Sq.km. is Reserve Forest.

One National Park and 26 Wildlife Sanctuaries and 01 Conservation Reserve constitute the Protected Area network of the State covering 11.82% of its geographical area. Dudhwa National Park located in the State is known for successful translocation of one horned rhinoceros, home for swamp Deer and Bengal florican.

1.3 Forest Cover

According to Indian State of Forest Report 2021, the Forest Cover in the State is 14817.89 sq km which is 6.15 % of the State's geographical area. In terms of forest canopy density classes, the State has 2626.61 sq km under Very Dense Forest (VDF), 4029.37 sq km under Moderately Dense Forest (MDF) and 8161.91 sq km under Open Forest (OF). Forest Cover in the State has increased by 12.24 sq km as compared to the previous assessment reported in ISFR 2019.

TABLE-2
Forest Cover of Uttar Pradesh



Class	Area	% of GA
VDF	2626.61	1.09
MDF	4029.37	1.67
OF	8161.91	3.39
Total	14817.89	6.15
Scrub	563.38	0.23



1.4 Forestry Sector of Uttar Pradesh

Forestry Sector of Uttar Pradesh is headed by Principal Secretary, Forests at Government level and PCCF & HOFF at the department level. At the field level forestry sector is divided into seven zones namely, Central, Ruhelkhand, Western, Southern, Bundelkhand, Agra & Eastern headed each by CCFs. In addition to these seven zones, Lucknow Mandal, Mirzapur Mandal, Kanpur Mandal, Gorakhpur Mandal are also headed by CCFs. These seven zones are further divided into fourteen circles headed each by CFs. These fourteen circles and four mandals have territorial jurisdiction over seventy six forest divisions. At the headquarter level Social Forestry scheme and agro-forestry, Projects, Bio-Diversity and Audit & Non-plan, information technology, Watershed management/Green India Mission, Nursery management each are headed by APCCFs and Policy analysis & coordination, Administration, Protection & vigilance, Publicity, Monitoring & Evaluation, HRD, Nodal Officer, Planning, Finance & Audit, CAMPA, Land record & settlement and Forest utilization & Protection and Court case each are headed by CCFs. CCF Court cases is assisted by CF Court case Noida and Allahabad. At the headquarter level Director Statistics and Finance Controller look after statistical data compilation & analysis and finance issues respectively.

Forestry sectors has three wings namely, Wildlife, Research & Training and Monitoring & Working plan each headed by PCCFs.

In wildlife wing there are three zones namely CCF wildlife west, CCF wildlife east and Field Director Dudhwa Tiger Reserve. In addition to these three zones, Pilibhit Tiger Reserve, Endangered Species, Kanpur Zoo, Lucknow Zoo, Etawah Safari Park, Etawah and Gorakhpur Zoo are headed by CFs. These three zones and Pilibhit Tiger Reserve have territorial jurisdiction over nine wildlife divisions.

In Research and Training wing PCCF Research and Training is assisted by two APCCFs viz APCCF State forest research institute Kanpur and APCCF Forest Training Institute Kanpur. In research wing there are three Silvas working at Kanpur, Bareilly and Ramnagar (Varanasi) headed each by CCFs. In training wing there are three DCFs working under the guidance of APCCF/Director FTI, Kanpur.

In Monitoring & Working plan wing PCCF Working plan is assisted by CCF Working plan and CCF Monitoring and Evaluation. Working Plan wing is further is divided into four working plan circles each headed by CFs.



Renukoot Forest Division, CA Plantation



Gautambuddha Nagar Forest Division, CA Plantation



CHAPTER-2

BRIEF DESCRIPTION ABOUT CAMPA

2.1 Background

Forests are an important natural resource and a render variety of ecological services, they must not be destroyed. However, because of development are industrial requirements, forests are routinely cut, or, as it is said in official language, “diverted for non-forest purposes”.

According to the provisions of the Forest Conservation Act, 1980, prior permission from the Government of India is mandatory for non-forestry use of forest land. In land transfer cases monies against compensatory plantation, penal compensatory plantation, additional compensatory plantation, net present value, catchment area treatment plan and integrated wildlife management plan are collected from User Agencies.

The Supreme Court in its order in T.N. Godavarman Thirumulpad vs. Union of India and Others [Writ Petition (Civil) No. 202 of 1995], dated the 30th October, 2002, observed that a Compensatory Afforestation Fund be created in which all the monies received from the user agencies towards compensatory afforestation, additional compensatory afforestation, penal compensatory afforestation, net present value of the diverted forest land or catchment area treatment plan shall be deposited;

It had also been observed that the money received from the user agencies in cases where forest land diverted falls within protected areas, that is, the areas notified under the Wild Life (Protection) Act, 1972 for undertaking activities related to protection of biodiversity or wildlife shall also be deposited in the Fund.

The Supreme Court has directed that, besides artificial regeneration (Plantations), the Fund shall also be utilised for undertaking assisted natural regeneration, protection of forests, infrastructure development, wildlife protection and other related activities and an independent system of concurrent monitoring and evaluation should be evolved and implemented through the Compensatory Afforestation Fund to ensure effective and proper utilization of funds.

The Supreme Court in its judgment dated 26th September, 2005 in the said Writ Petition observed that the Fund generated for protecting ecology and providing regeneration should not be treated as a Fund under article 266 and article 283 of the Constitution. In its direction dated the 5th May, 2006, the Supreme Court had directed that since the Government has not constituted a Compensatory Afforestation Fund Management and Planning Authority (hereinafter referred to as Authority), an ad hoc Authority should be constituted till the Compensatory Afforestation Fund Management and Planning Authority becomes operational and directed to centrally pool the money recovered on behalf of the said Authority lying in the States and Union territories into the ad hoc Compensatory Afforestation Fund Management and Planning Authority;

Central Government formulated guidelines dated the 2nd July, 2009 on the subject of State Authority for utilisation of funds lying with the ad hoc Authority. In its direction dated the 10th July, 2009, the Supreme Court had directed that the guidelines and structure of the State Authority prepared by the Central Government may be notified and implemented.

In its directions dated the 10th July, 2009, the Supreme Court further directed that till an alternative system is put in place, after obtaining permission from the Supreme Court, the money towards compensatory afforestation, net present value and protected areas (national parks, wildlife sanctuaries) shall continue to be deposited in the ad hoc Authority.



In compliance of the directions of the Supreme Court including its order dated the 5th May, 2006, over rupees thirty eight thousand crores as collected by the State Governments and Union territory Administrations have been placed under the ad hoc Authority, and deposited in the nationalized banks.

Absence of permanent institutional mechanism for utilization of funds collected by the State Governments and Union territory Administrations is the main reason for accumulation of huge unspent funds in the ad hoc Authority.

Based on the above orders, directions and observations of the Supreme Court to ensure safety, security and expeditious utilization in a transparent manner of funds accumulated with the ad hoc Authority and the funds to be collected by the State Governments and Union territory Administrations, it is proposed to create a National Compensatory Afforestation Fund and a National Compensatory Afforestation Fund Management and Planning Authority at the national level, and a State Compensatory Afforestation Fund and a State Compensatory Afforestation Fund Management and Planning Authority in each State and Union territory, by an Act of Parliament.

2.2 Compensatory Afforestation Fund Act – 2016

The Ministry of Law and Justice, Government of India notified the CAF Act – 2016 (No. 38 of 2016) on 03 August, 2016 in order to reframe and augment the process of implementation of the stipulated conditions of the forest land transfer proposals. The act primarily proposes to create a non-lapsable and interest bearing Compensatory Afforestation Fund at National and State Level for management and utilization of monies collected under Forest (Conservation) Act, 1980. Based on the past orders, directions and observations of the honourable Supreme Court to ensure safety, security and expeditious utilization in a transparent manner of funds accumulated with the ad hoc Authority and the funds to be collected by the State Governments and Union territory Administrations, the Government of India notified the creation of National Compensatory Afforestation Fund Management and Planning Authority at the national level and a State Compensatory Afforestation Fund Management and Planning Authority in each State and Union territory by this Act of Parliament. This Act is now effective from the date of 30th September, 2018 all over the country.

Salient Feature of CAF Act, 2016

Section	Description
3(1)	Establishment of a special fund to be called the “National Compensatory Afforestation Fund” under the public account of India.
3(2)	The National Fund shall be under the control of the Central Government and managed by the National Authority in such manner as may be prescribed.
3(3)	On the date of establishment of the National Fund, all monies collected by the State Governments and Union territory Administrations which has been placed under the ad hoc Authority and deposited in the nationalized banks shall be transferred to the National Fund.
3(4)	There shall also be credited into the National Fund, by each State on yearly basis, ten per cent. of the funds realized from the user agencies in respect of the forest land diverted in their favour, which have been credited directly into the State Fund.
4(1)	Establishment of “State Compensatory Afforestation Fund-..... (name of State)” under public accounts of such State.



Section	Description
4(2)	The State Fund in each State shall be under the control of the State Government of such State and managed by the State Authority of such State, in such manner as may be prescribed.
4(3)	There shall be credited into the State Fund of a State— (i) The unspent balance of all monies which has been transferred by ad hoc Authority to the State CAMPA. (ii) Ninety per cent. of the all monies collected by a State, which has been placed under the ad hoc Authority and the interest accrued thereon. (iii) All monies realized from User Agencies in respect of land transfer cases.
4(5)	Monies received in the State Fund shall be an interest bearing fund under public accounts.
4(6)	The balance in State Fund shall be non-lapsable.
5(a)	Ninety percent of all the monies collected by State and placed under the Ad-hoc authority and the interest accrued there on shall be transferred to the State Fund.
6	Disbursement and utilization of State Fund.
7	Accounting procedure to regulate the manner of crediting the monies to National Fund and State Fund.
8(1)	Constitution of National Authority.
8(2)	The National Authority shall manage and utilize the National Fund for the purposes of this Act.
9(1)	The governing body of the National Authority shall, in performance of its functions and powers under the Act, be assisted by the executive committee and the monitoring group.
10(1)	Constitution of State Authority.
10(2)	The Central Government may, if so desires, appoint different dates for constitution of State Authority in each of the States.
10(3)	The State Authority constituted in a State shall be responsible for the management of the State Fund of such State and its utilization for the purposes of the Act.
10(4)	The State Authority shall consist of a Governing Body and shall be assisted by Steering Committee and an Executive Committee.
11(4)	The State Authority may appoint officers for a period not exceeding five years, to assist the Steering Committee and Executive Committee.
14	Powers and functions of National Authority.
15	Powers and functions of Executive Committee of National Authority.
15(1)(i)	Executive Committee of National Authority shall approve, within 3 months date of receipt, APO of state Authorities, with such amendment as it deems fit and proper.
17	Powers and functions of State Authority.
18(1)(i)	Steering Committee of State Authority shall scrutinize and approve with with such amendment as it deems fit and proper, the Annual Plan of Operation prepared by the Executive Committee of such state Authority and send the same to the Executive Committee of National Authority for final approval.
19(1)(i)	The Executive Committee of State Authority shall formulate and submit Annual Plan of Operations to the Steering Committee of the State Authority for its concurrence.
20(1)	The National Authority shall prepare its budget for the next financial year.
24	The Annual Report and audit report of National Authority to be laid before each House of Parliament.
25(1)	Each State Authority shall prepare its budget for the next financial year.



Section	Description
29	The annual report and audit report of State Authority to be laid before State Legislature.
30(1) 30 (2)	The Central Govt. in consultation with the State Governments may, after previous publication, make rules for carrying out the purposes of this act.
32(1)	The amount credited to the National Fund shall be deemed to be credited to the public account of India within the meaning of articles 266 and 283 of the constitution and it shall be regulated by law made by Parliament in this behalf.
32(3)	The amount credited to the State Fund shall be deemed to be credited to the public account of the State within the meaning of articles 266 and 283 of the constitution and it shall be regulated by law made by State Legislature in this behalf.
33	The Central Government may, if it finds necessary or expedient in the public interest, issue policy directives to the National Authority or any State Authority.

2.3 Compensatory Afforestation Fund Rules, 2018

The Ministry of Environment, Forests & Climate Change (Forest Conservation Division), Government of India, New Delhi notified “The Compensatory Afforestation Fund Rules, 2018” on dated 10th Aug, 2018 for implementation of CAF Act, 2016.

Salient Feature of CAF Rules, 2018

Rule	Description
3	Management of National Fund— The National Fund shall be managed according to the provisions of the Government Accounting Rule 1990 and the General Financial Rules, 2017 as applicable from time to time.
4	Management of State Fund— The State Fund shall be managed according to the provisions of the State Financial Rules or any such rules applicable from time to time in a State.
5 (1) (2)	<p>Manner of utilization of net present value.— The monies received towards net present value deposited in the State Fund shall be used in the manner provided in sub-rule (2) and sub-rule (3). Not less than eighty per cent. of the monies referred to in sub-rule (1) shall be used for forest and wildlife management in a State namely:-</p> <ul style="list-style-type: none"> a) Assisted Natural Regeneration; b) Artificial Regeneration; c) Silvicultural operations in forests; d) Protection of plantations and forests; e) Pest and disease control in forest; f) Forest fire prevention and control operations; g) Soil and moisture conservation work in the forest; h) Voluntary relocation of villages from protected areas; i) Improvement of wildlife habitat as provided in the approved wildlife management plan or working plan; j) Planting and rejuvenation of forest cover on non-forest land falling in wildlife corridors; k) Establishment, operation and maintenance of animal rescue centre and veterinary treatment facilities for wild animals; l) Supply of wood-saving cooking appliances and other forest produce saving devices in forest fringe villages as specified by the National Authority from time to time; m) Management of biological diversity and biological resource.



Section	Description
(3)	<p>Not more than twenty per cent. of the monies referred to in sub-rule (1) shall be utilized for strengthening of the forest and wildlife related infrastructure, capacity building of the personnel involved in utilization of State Fund namely:-</p> <ol style="list-style-type: none"> establishment, up-gradation and maintenance of modern nurseries and other planting stock production facilities for production of quality planting materials; promoting conservation, sustainable use and documentation of biological diversity including preservation of habitats, conservation of land and folk varieties and cultivars, domesticated stocks and breeds of animals and microorganisms and chronicling of knowledge relating to biological diversity. purchase and maintenance of equipment or devices used for communication and information technology for the purpose of protection of forest and wildlife; construction, up-gradation and maintenance of inspection paths, forest roads in forest area, fire lines, watch towers, check posts and timber depots; construction of residential and official buildings in forests for front line staffs deployed for protection of forest and wildlife; casual engagement of local people or labours to assist regular staff of State Forest Department for works for protection of forest and wildlife undertaken from State Fund; survey and mapping of forest areas for forest fire control, compensatory afforestation works, soil and moisture conservation, catchment area treatment and wildlife management for preparing annual plans to be executed from the State Fund; independent concurrent monitoring and evaluation and third party monitoring of various works undertaken from State Fund; publicity-cum-awareness programme and exhibition on the various schemes being implemented by the State Authority from State Fund; production and distribution of quality planting material through certified nurseries at subsidised price for promotion of trees outside forests on Government lands promoted by State Government; forest certification and development of certification standards:
5(4)	The monies referred to in sub-rule (1) shall not be used for following activities, namely:-
(a)	payment of salary, travelling allowances, medical expenses, etc. to regular, contractual and casual employees of the State Forest Department for implementing programmes in various forest divisions undertaken from the State Fund;
(b)	undertaking foreign visits;
(c)	payment for legal services for defending cases filed in Tribunals or Courts not related to the management of State Authority;
(d)	purchase of vehicles or staff cars for officers and heavy vehicles and machines for the State Forest Department for implementing programmes in various forest divisions undertaken from the State Fund;
(e)	construction of residential and official buildings for officers above the Forest Range Officer of the State Forest Department for implementing programmes in various forest divisions undertaken from the State Fund;
(f)	leasing, hiring and purchase of land for afforestation purposes;
(g)	purchase of furniture, office equipment, fixtures including air conditioners, and generator sets for residences and offices of the State Forest Department for implementing programmes in various forest divisions undertaken from the State Fund;
(h)	mandatory afforestation as per the working plan in the forest in blanks created by commercial felling of trees for revenue generation undertaken under working plan prescription;



Section	Description
(i)	undertaking forest and wildlife conservation and other activities undertaken under other schemes of the Government for the purpose of part financing the scheme for completing left over works or complementary works of such schemes;
(j)	establishment, expansion and up-gradation of zoo and wildlife safari;
(k)	providing financial support, either by way of grant or equity to existing or for setting up new forest corporations, boards, etc.
(6)	Utilization of interest accrued on deposits in State Fund—The interest accrued on monies in the State Fund shall be used in the following manner:—
(a)	not less than sixty per cent. of the interest transferred to the State Fund and further accrued on the amount available in the State Fund referred to in sub-rule (1) shall be spent on following activities:- i. In view of offsetting the incremental cost of afforestation and wildlife management. ii. Disbursement of salary and allowances of members and staffs, both regular and contractual, of the State Authority; iii. Disbursement of sitting fees and allowances to nominated members of the State Authority.
6(b)	not more than forty per cent. of the interest transferred to the State Fund and further accrued on the amount available in the State Fund shall be spent for the non-recurring and recurring expenditure of the State Authority.
7	Appointment of Chief Executive Officer of National Authority.
9	Appointment of Chief Executive Officer of State Authority.
10	Appointment of Officers of State Authority.—The officers referred to in sub-section (4) and subsection (5) of section 11 of the act shall be appointed on deputation basis by the State Government.
16	Selection of non-official Members of State Authority.— (1) The Department of the State Government dealing with forests shall seek nomination from various Departments of the State Government, or Union territory Administration for non-official members of State Authority. (2) Departments of the State Government, District Administration of the State or Union territory shall forward the names for the non-official members of the State Authority with full credentials to the Department of the State Government dealing with forests for consideration.
17	Selection Committee-
(2)	The Selection Committee to prepare the panel of eligible candidates for appointment of non-official members of the State Authority shall be constituted under the chairmanship of Chief Secretary of the State
32	Preparation of budget of National Authority for the next financial year and forwarding the same to Central Govt. by 31 st December.
36	Preparation of budget of State Authority for the next financial year and forwarding the same to State Govt. and Central Govt. by 31 st December.
39	The annual plan of operation of the State Authority shall be prepared in Form-XII and shall be submitted by the State Authority before the 31st December of every year to the National Authority for the next financial year.



For implementation of the provisions of CAF Act, 2016 & CAF Rules, 2018 the following Government orders have been issued by Govt. of India:-

1.	Govt. of India notification dated 13.08.2018 in respect of appointing date on which the provision of CAF Act shall come into force
2.	Notification dated 14.09.2018 regarding constitution of National CAMPA and State CAMPA
3.	Govt. of India notification dated 20.11.2018 regarding Compensatory Afforestation Fund (Accounting Procedure) Rules, 2018
4.	Govt. of India letter dated 27.11.2018 regarding opening of head of accounts under section 7 of the CAF Act 2016
5.	Notification dated 08.01.2019 regarding constitution of Governing Body of National Authority
6.	Notification dated 08.01.2019 regarding constitution of Executive Committee of National Authority
7.	Govt. of India letter dated 28.01.2019 regarding (modified/revised schedule-I) opening of head of accounts under section 7 of CAF Act 2016



Pilibhit Tiger Reserve, Construction of Watch Tower



Firozabad Forest Division, Advance Soil Work – 2019



CHAPTER-3

BRIEF DESCRIPTION ABOUT UP CAMPA

3.1 Background

The guideline of State CAMPA has been issued by Ministry of MoEF, Govt. of India on dated 02 July, 2009. These guidelines were intended to assist the states for formulation of the requisite authority (State CAMPA) in consonance with the direction of Hon'ble Supreme Court.

On 02 June, 2010 Uttar Pradesh CAMPA was notified under Society Registration Act, 1860. Later on Uttar Pradesh CAMPA was reconstituted as an Authority on dated 22 Sep, 2015 in follow-up of the direction issued by Ad-hoc CAMPA. This was the Ad-hoc arrangement made in follow-up the guidelines issued by Gol in 2009 in consonance with the direction of Hon'ble Supreme Court.

The Ministry of Law and Justice, Government of India notified the CAF Act – 2016 (No. 38 of 2016) on 03 August, 2016 & in exercise of the powers conferred by the sub section-1 of section-10 of the said Act, the central government appointed the 30th Day of Sept, 2018 as date of constitution of State Authority for state of Uttar Pradesh to be called as “The Uttar Pradesh State Compensatory Afforestation Fund Management and Planning Authority”.

Uttar Pradesh has been a leading state with respect to the implementation of the provisions of the CAF Act, 2016, CAF Rules, 2018 & CAF (Accounting Procedure) Rules, 2018. The following orders have been issued by Uttar Pradesh Government for implementation of the provisions of the CAF Act, 2016 & CAF Rules, 2018 :-

S. No.	Notifications/Orders
1.	Notification dated 17.10.2018 regarding opening of heads by State Government
2.	Notification dated 28.12.2018 regarding constitution of Governing Body, Steering Committee and Executive Committee of State Authority
3.	Notification dated 17.01.2019 regarding constitution of selection committee for selection of Non-official members of Executive Committee and Steering Committee of State Authority
4.	Notification dated 15-02-2019 regarding opening of revised accounting heads by State Government.
5.	Notification dated 22-02-2019 regarding establishment of state fund by State Government.
6.	Office memo dated 06.03.2019 regarding selection of Non-official members of Executive Committee and Steering Committee of State Authority by State Government

3.2 Committees under Uttar Pradesh CAMPA

As per the provisions of CAF Act, 2016, there are three committees constituted under Uttar Pradesh CAMPA for its overall management.



3.2.1 The Governing Body

The Governing Body of UP CAMPA has been constituted under the Chairmanship of Hon'ble Chief Minister of Uttar Pradesh with a total membership of 15 members. The structure of Governing Body of UP CAMPA is as follows:-

S. No.	Post held	Position in Authority
1	Chief Minister, Uttar Pradesh	Chair Person, ex-officio
2	Forest Minister, Government of Uttar Pradesh	Member, ex-officio
3	Chief Secretary, Government of Uttar Pradesh	Member, ex-officio
4	Principal Secretary, Environment, Finance, Planning, Rural Development, Revenue, Agriculture, Tribal Development, Panchayati Raj and Science and Technology, Government of Uttar Pradesh	Member, ex-officio
5	Principal Secretary, Forest and Wildlife, Government of Uttar Pradesh	Member Secretary
6	Principal Chief Conservator of Forests and Head of Department, Uttar Pradesh	Member, ex-officio
7	Chief Wildlife Warden, Uttar Pradesh	Member, ex-officio

The Powers and Functions of the Governing Body -

According to section 17(1) of CAF Act, 2016, the Powers and Functions of the Governing Body are as follows:-

The governing body of a State Authority shall—

(i) lay down the broad policy framework for the functioning of such State Authority within the overall framework notified by the Central Government on the recommendations of the National Authority;

(ii) review the working of the State Authority from time to time.

(2) The governing body of a State Authority shall meet at least once in six months.

(3) The governing body, steering committee and executive committee of a State Authority shall meet at such places and shall observe such rules and procedures in regards to transaction of business at its meeting, including the quorum thereat, as may be prescribed.

3.2.2 The Steering Committee

The Steering Committee of UP CAMPA has been constituted under the Chairmanship of Chief Secretary, Government of Uttar Pradesh with a total membership of 18 members. The structure of Steering Committee of UP CAMPA is as follows:-



S. No.	Post held	Position in Authority
1	Chief Secretary, Government of Uttar Pradesh	Chair Person, ex-officio
2	Principal Secretary, Forest and Wildlife, Environment, Finance, Planning, Rural Development, Revenue, Agriculture, Tribal Development, Panchayati Raj and Science and Technology, Government of Uttar Pradesh	Member, ex-officio
3	Principal Chief Conservator of Forests and Head of Department, Government of Uttar Pradesh	Member, ex-officio
4	Chief Wildlife Warden, Government of Uttar Pradesh	Member, ex-officio
5	Nodal Officer/Chief Conservator of Forests, Land-Transfer	Member, ex-officio
6	Head, Ministry of Environment, Forest and Climate Change, Regional Office, U.P.	Member, ex-officio
7	Nodal Officer, State Forest Development Agency, Uttar Pradesh	Member, ex-officio
8	Specialist in tribal affairs or representative of tribal community appointed by the state government	Member
9	Chief Executive Officer, State Authority, Uttar Pradesh	Member Secretary

The Powers and Functions of the Steering Committee -

According to section 18(1) of CAF Act, 2016, the Powers and Functions of the Steering Committee are as follows:-

The Steering Committee of a State Authority shall—

- (i) scrutinise and approve with such amendments as it may deems fit and proper the annual plan of operations prepared by the executive committee of such State Authority and send the same to the executive committee of the National Authority for final approval;
 - (ii) monitor the progress of the utilisation of funds released from the State Fund;
 - (iii) review reports on decision taken by executive committee including investment decisions;
 - (iv) approve, subject to prior concurrence of the State Government, proposals formulated by the executive committee for creation of posts in the State Authority;
 - (v) approve annual report of the State Authority and send the same to the State Government to lay it, each year, in each House of the State Legislature;
 - (vi) ensure inter-departmental coordination.
- (2) The steering committee of a State Authority shall meet at least once in every three months.



3.2.3 The Executive Committee

The Executive Committee of UP CAMPA has been constituted under the Chairmanship of Principal Chief Conservator of Forests (HoFF) with a total membership of 21 members. The structure of Executive Committee of UP CAMPA is as follows:-

S. No.	Post held	Position in Authority
1	Principal Chief Conservator of Forests and Head of Department, Uttar Pradesh	Chair Person, ex-officio
2	Chief Wildlife Warden, Uttar Pradesh	Member, ex-officio
3	Officers not below the level of Chief Conservator of Forests related to the implementation of schemes related to forest and wildlife.	Member, ex-officio
4	Officers not below the level of Chief Conservator of Forests related to the implementation of forest research	Member, ex-officio
5	Nodal Officer, State Forest Development Agency, U.P.	Member, ex-officio
6	Representatives of Environment, Finance, Planning, Rural Development, Revenue, Agriculture, Tribal Development, Panchayati Raj and Science and Technology Departments	Member, ex-officio
7	Finance Controller/Financial Adviser nominated by Finance Department	Member, ex-officio
8	Members of two reputed voluntary organizations appointed by the state government	Member
9	Two representatives of the District Level Panchayati Raj Institution appointed by the State Government	Member
10	A specialist in tribal affairs or a representative of a tribal community appointed by the State Government	Member
11	Chief Executive Officer, State Authority, Uttar Pradesh	Member Secretary

The Powers and Functions of the Executive Committee -

According to section 19(1) of CAF Act, 2016, the Powers and Functions of the Executive Committee are as follows:-

The Executive Committee of a State Authority shall—

- (i) Formulate and submit annual plan of operations to the steering committee of the State Authority for its concurrence;
- (ii) Undertake qualitative and quantitative supervision, monitoring and evaluation of the works being implemented from amounts available in the State Fund;
- (iii) Invest surplus amounts available in the State Fund of such State;
- (iv) Maintain books of account and other records;
- (v) Submit reports to the steering committee of the State Authority;
- (vi) Prepare annual report of the State Authority;
- (vii) Deploy staff on contractual basis or on deputation to the posts in the State Authority;
- (viii) Formulate proposals for creation of posts in the State Authority;



- (ix) Be responsible for delegation of financial or administrative powers;
- (x) Be responsible for other day-to-day working in respect of the State Authority;
- (xi) Maintain and update public information system on the State Authority and present all information on its transaction in the public domain;
- (xii) Undertake any other work as may be assigned by the governing body or steering committee of the State Authority or the State Government, from time to time.
- (2) The executive committee of a State Authority shall meet at least once in every three months.

3.3 Meetings of the Committees

The Governing Body, Steering Committee & Executive Committee of “The Uttar Pradesh State Compensatory Afforestation Fund Management and Planning Authority” have been constituted as per provisions of guidelines 2009 and after implementation of CAF Act, 2016 & CAF Rules, 2018, the committees have been constituted as per provisions therein. The details of the meeting of The Governing Body, Steering Committee & Executive Committee of “The Uttar Pradesh State Compensatory Afforestation Fund Management and Planning Authority” are as follows:-

Governing Body Meeting Details (Constituted as per CAMPA Guidelines, 2009)		
S. No.	Meetings	Date
1	1st Meeting	01.03.2011
2	2nd Meeting	17.09.2011
3	3rd Meeting	15.10.2018

Steering Committee Meeting Details (Constituted as per CAMPA Guidelines, 2009)		
S. No.	Meetings	Date
1	1st Meeting	17.01.2011
2	2nd Meeting	04.08.2011
3	3rd Meeting	26.12.2011
4	4th Meeting	10.10.2012
5	5th Meeting	19.11.2014
6	6th Meeting	02.06.2015
7	7th Meeting	24.07.2015
8	8th Meeting	24.06.2016
9	9th Meeting	13.10.2017
10	10th Meeting	06.08.2018



Steering Committee Meeting Details (Constituted as per CAF Act, 2016)		
S. No.	Meetings	Date
1	1st Meeting	07.03.2019
2	2nd Meeting	15.05.2020
3	3rd Meeting	17.06.2020
4	4th Meeting	11.01.2021
5	5th Meeting	30.03.2021

Ad-hoc CAMPA Executive Committee Meeting Details (Constituted as per CAMPA Guidelines, 2009)		
S. No.	Meetings	Date
1	1st Meeting	22.09.2010
2	2nd Meeting	22.12.2010
3	3rd Meeting	29.12.2010
4	4th Meeting	12.01.2011
5	5th Meeting	11.07.2011
6	6th Meeting	26.03.2012
7	7th Meeting	30.05.2012
8	8th Meeting	29.08.2012
9	9th Meeting	17.05.2013
10	10th Meeting	02.09.2013
11	11th Meeting	23.07.2014
12	12th Meeting	22.08.2014
13	13th Meeting	19.09.2014
14	14th Meeting	23.09.2014
15	15th Meeting	21.10.2014
16	16th Meeting	03.03.2015
17	17th Meeting	18.05.2015
18	18th Meeting	03.07.2015
19	19th Meeting	10.07.2015
20	20th Meeting	10.07.2015
21	21st Meeting	28.08.2015
22	22nd Meeting	20.10.2015
23	23rd Meeting	03.11.2015
24	24th Meeting	30.11.2015
25	25th Meeting	27.01.2016
26	26th Meeting	10.02.2016
27	27th Meeting	03.03.2016
28	28th Meeting	08.03.2016
29	29th Meeting	03.06.2016
30	30th Meeting	15.09.2016



S. No.	Meetings	Date
31	31st Meeting	17.10.2016
32	32nd Meeting	30.11.2016
33	33rd Meeting	23.02.2017
34	34th Meeting	23.03.2017
35	35th Meeting	02.06.2017
36	36th Meeting	22.11.2017
37	37th Meeting	05.12.2017
38	38th Meeting	13.04.2018
39	39th Meeting	11.07.2018
40	40th Meeting	27.09.2018

State CAMPA Executive Committee Meeting Details (Constituted as per CAF Act, 2016)		
S. No.	Meetings	Date
1	1st Meeting	07.03.2019
2	2 nd Meeting	16.03.2020
3	3 rd Meeting	26.05.2020
4	4 th Meeting	21.12.2020
5	5 th Meeting	01.03.2021
6	6 th Meeting	31.08.2021
7	7 th Meeting	18.01.2022

3.4 Transfer of Funds

According to the provisions of the Forest Conservation Act, 1980, prior permission from the Government of India is mandatory for non-forestry use of forest land. In land transfer cases monies against compensatory plantation, penal compensatory plantation, additional compensatory plantation, net present value, catchment area treatment plan and integrated wildlife management plan are collected from User Agencies and deposited in Ad-hoc CAMPA/National CAMPA, New Delhi.

Section 4 of CAF Act, 2016 provides for establishment of State Fund of each State Authority in following manner:-

- 4.(1) With effect from such date as each State Government may, by notification in the Official Gazette, appoint in this behalf, there shall be established for the purposes of this Act, a special Fund to be called the "State Compensatory Afforestation Fund-..... (name of State)" under public accounts of such State: Provided that in case of Union territory having no legislature, such fund shall be established under the public account of Union of India with effect from such date as the Union territory Administration may, by notification in the Official Gazette, appoint in this behalf.
- 4.(2) The State Fund in each State shall be under the control of the State Government of such State and managed by the State Authority of such State, in such manner as may be prescribed.
- 4.(3) There shall be credited into the State Fund of a State—
 - (i) the unspent balance of all monies which has been transferred by ad hoc Authority to the State Compensatory Afforestation Funds Management and Planning Authority constituted in such State in compliance of guidelines dated the 2nd July, 2009;



- (ii) all monies transferable from the National Fund under clause (a) of section 5;
- (iii) all monies realised from user agencies by such State towards compensatory afforestation, additional compensatory afforestation, penal compensatory afforestation, net present value, catchment area treatment plan or any money for compliance of conditions stipulated by the Central Government while according approval under the provisions of the Forest (Conservation) Act, 1980 (69 of 1980);
- and (iv) the funds recoverable from user agencies by such State in cases where forest land diverted falls within the protected areas, that is, areas notified under sections 18, 26A or 35 of the Wild Life (Protection) Act, 1972 (53 of 1972) for undertaking activities relating to the protection of biodiversity and wildlife.

In compliance of above section of CAF Act, 2016 and the provisions under Compensatory Afforestation Funds (Accounting Procedure) Rules, 2018, National Authority (CAMPA), Govt. of India has transferred Rs. 18,19,62,67,880.00 (the Uttar Pradesh state's 90% share (Balance upto 07.02.2019)) from National Compensatory Afforestation Deposits under "Major head-8336-Civil Deposits" to State Compensatory Afforestation Fund under "Major head-8121-General & Other Reserve Funds" to Uttar Pradesh, vide letter no. 11-100/2015-FC dated 29.08.2019.

The details of money transferred are as follows:-

Account Head Major Head 8336-Civil Deposits Minor head 102- National Compensatory Afforestation Deposits Sub Head- 28- Uttar Pradesh Detailed Head-	Amount (Rupees)
01- Compensatory Afforestation	7,29,49,81,336
02- Catchment Area Treatment Plan	5,26,99,360
03- Integrated Wildlife Management Plan	0
04- Net Present Value of Forest Land	8,75,58,52,000
05- Interest	77,87,61,515
06- Others	1,31,39,73,669
Total	18,19,62,67,880

Office of Accountant General, UP, Allahabad, vide letter no. 519 dated 05.03.2020, have confirmed the receipt of above funds in State Compensatory Afforestation Fund.



PART - II

CHAPTER-4

ANNUAL PLAN OF OPERATION (APO)

4.1 Introduction

The Annual Plan of Operation is prepared by Uttar Pradesh Compensatory Afforestation Fund Management and Planning Authority as per provisions of section-39 of CAF Rules, 2018. Each year the direction, regarding preparing the Annual Plan of Operation (APO) and filling up the forms designed for various component of plan, are issued to various working units (Divisions/offices). Each working units prepares the Annual Plan of Operation (APO) for their area as provisions of CAF Rules, 2018 and submit it to the controlling officers. The controlling officers (concerned Zonal/Mandal Chief Conservator of Forests) examine the APOs minutely and after incorporating their own suggestions/correction countersign the APOs and submit it to State CAMPA Office for further action.

The APOs submitted by various working units of the state are compiled and presented before Executive Committee of UP CAMPA chaired by the Principal Chief of Conservator/HoFF, Uttar Pradesh for its final formulation.

The Executive Committee of UP CAMPA, as per provisions of section-19(1)(i) of CAF Act, 2016 formulates and submits the Annual Plan of Operation (APO) to Steering Committee of UP CAMPA chaired by the Chief Secretary, Uttar Pradesh for its concurrence.

The Steering Committee of UP CAMPA, as per provisions of section-18(1)(i) of CAF Act, 2016 scrutinises and approves with such amendments as it may deems fit and proper the Annual Plan of Operation prepared by Executive Committee of UP CAMPA for sending the same to the Executive Committee of National Authority for final approval. The APO once approved by Steering Committee of UP CAMPA is sent to office of the CEO, National CAMPA, New Delhi for presenting before Executive Committee of National Authority for final approval.

The Executive Committee of National Authority, as per provisions of section-15(1)(i) of CAF Act, 2016 approves Annual Plan of Operation of UP CAMPA, with such amendments as it deems fit and proper.

Since the inception, year-wise Outlay of the Annual Plan of Operation (APO) approved by Ad-hoc CAMPA/National Authority:-

(Figures in Lacs)

APO Year	Outlay approved by Steering Committee of UP CAMPA	Outlay approved by Ad-hoc CAMPA/ National Authority	Fund Released by Ad-hoc CAMPA/ State Government
1	2	3	4
2009-10	4100.14709	4709.62	4709.62
2010-11	4636.94860	3535.05	3535.05
2011-12	4890.83200	3048.00	3048.00
2012-13 & 2013-14 (Consolidated)	6088.00000	6087.18	6087.18
2014-15	8164.69900	8104.00	8104.00
2015-16	11950.63000	9700.00	9700.00
2016-17	13278.89900	10100.00	10100.00
2017-18	16035.19000	12300.00	12300.00
2018-19	15200.00000	15060.00	15060.00
2019-20	29500.00000	28868.00	19720.50
2020-21	27500.00000	27200.00	27124.50
2020-21 (Additional)	34200.00000	17001.00	0.00
Total -	175545.34569	145712.85	119488.85



4.2 Annual Plan of Operation (APO) for 2020-21

Initially, the Annual Plan of Operation for 2020-21 with total Outlay of Rs. 27500.00 Lacs was formulated by Executive Committee of UP CAMPA in its 2nd meeting held on 16.03.2020. The Steering Committee of UP CAMPA under the Chairmanship of Chief Secretary, UP scrutinised and approved the APO for 2020-21 with a total Outlay of Rs. 27500.00 Lacs in its 2nd meeting held on 15.05.2020 with the following main components:-

(Figures in Lacs)

S. No.	Component	Amount
1	2	3
1	Compensatory Afforestation	3900.37
2	CAT Plan	208.31
3	Net Present Value (NPV)	21172.42
4	Accrued Interest	2219.00
TOTAL -		27500.00

4.3 Annual Plan of Operation (APO) for 2020-21 (Additional)

Under special conditions of Covid-19, in order of the economic package issued by the Central Government under the instructions given by the Chief Secretary, Govt. of Uttar Pradesh, vide his letter no. 345/PSMS/2020 dated 16.05.2020, an Additional Annual Plan of Operation was formulated for carrying out such forestry related activities which are highly labour intensive.

As per above directions, the Annual Plan of Operation for 2020-21 (Additional) with total Outlay of Rs. 27500.00 Lacs was formulated by Executive Committee of UP CAMPA in its 3rd meeting held on 26.05.2020. The Steering Committee of UP CAMPA under the Chairmanship of Chief Secretary, UP scrutinised and approved the APO for 2020-21 (Additional) with a total Outlay of Rs. 34200.82.00 Lacs in its 3rd meeting conducted by circulation. The main component of the APO are as following:-

(Figures in Lacs)

S. No.	Component	Amount
1	2	3
1	Net Present Value (NPV)	34200.82
TOTAL -		34200.82

The above two APOs were discussed in 6th, 7th, 8th & 9th Meeting of the Executive Committee, National Authority held on 27-28th May, 2020, 30th June, 2020, 25th Aug, 2020 & 12th Jan, 2021 respectively. The component wise approval accorded by Executive Committee of National CAMPA is as follows:-



(FIGURES IN CRORE)

Sr. No.	COMPONENT	Approved by Executive Committee, National CAMPA				
		Approved Outlay of APO (2020-21)	Approved Outlay of Additional APO (2020-21)	Total approved outlay	Revised total approved Outlay	CAF Rules
1	2	3	4	5	6	7
I	Compensatory Afforestation (CA)	41.09		41.09	29.50	
II	NET PRESENT VALUE (NPV)					
1	Plantation under NPV					
A.	Non-CA plantation year 2020					
	(i) Normal Plantation	36.83		36.83	36.38	5(2)(b)
	(ii) Plantation along the Ganges and tributaries					
B.	Advance soil work for Non-CA plantation year 2021	43.85		43.85	81.41	5(2)(b)
C.	Maintenance of Non-CA plantations	44.75		44.75	43.84	5(2)(b)
	Total-	125.43		125.43	161.63	
2	ANR related works	1.13		1.13	1.13	5(2)(a)
3	Soil and moisture conservation works	8.87	88.22	97.09	8.87	5(2)(g)
	Silvicultural operations in forests		20.00	20.00		5(2)(c)
4	Protection of Plantations and Forests					
	(i) Survey demarcation and establishment of boundary pillars	3.51	22.51	26.02	3.51	5(2)(d)
	(ii) Strengthening of forest roads	1.93	26.71	28.64	1.93	5(3)(d)
	(iii) Enforcement work	2.99		2.99	2.99	5(2)(d)
	(iv) Motorcycles for frontline staff	3.00		3.00	0.50	5(2)(d)
	(v) Purchase of four wheel vehicles for frontline staff	3.00		3.00	1.00	5(2)(d)
	(vi) Installation and purchase of solar lights/solar lamp/solar torches in office/residential/rest house premises. (No.)	1.00		1.00	1.00	5(2)(d)
	(vii) Capacity building of frontline staff for the protection of forests and plantation	0.50		0.50	0.50	5(3)(b)
	Excavation of trench/other protective measures for protection of forests					
	(i) Protection of plantation and forests		10.96	10.96	0.00	5(2)(d)
	ii) Construction of residential and official buildings for frontline staff		1.61	1.62	0.00	5(3)(e)
	Total-	15.93	61.79	77.73	11.43	



(FIGURES IN CRORE)

Sr. No.	COMPONENT	Approved by Executive Committee, National CAMPA				
		Approved Outlay of APO (2020-21)	Approved Outlay of Additional APO (2020-21)	Total approved outlay	Revised total approved Outlay	CAF Rules
1	2	3	4	5	6	7
5	Forest fire prevention and control operations					
	(i) Purchase of state of art fire protection/management equipments	1.00		1.00	1.00	5(3)(d)
	(ii) Construction of watch towers	1.25		1.25	1.25	5(3)(d)
	(iii) Maintenance of watch towers	0.39		0.39	0.39	5(3)(d)
	Total-	2.64		2.64	2.64	
6	Improvement of Wildlife Habitat					
	(i) Man-animal conflict reduction	13.90		13.90	13.90	5(2)(i)
	(ii) Development of Dudhwa, Amangarh and Pilibhit Tiger Reserve	5.00		5.00	5.00	5(2)(i)
	(iii) Development/Maintenance of Katarniaghat, Sohagibarwa, Sohelwa, Kaimoor, Kashi, Kachhua, Chambal and other wildlife sanctuaries.	2.00		2.00	2.00	5(2)(i)
	(iv) Establishment of Anti-poaching surveillance and wildlife tracking system in Dudhwa Tiger Reserve	0.75		0.75	0.75	5(2)(i)
	(v) Development of bird sanctuaries	2.00		2.00	2.00	5(2)(i)
	(vi) Wildlife conservation and protection.	0.18		0.18	0.18	5(2)(i)
	(vii) Immunization/vaccination of cattle around wildlife sanctuaries/bird sanctuaries/national park	0.15		0.15	0.15	5(2)(i)
	Total-	23.98		23.98	23.98	
7	Bio-diversity Conservation					
	(i) Development of Wetlands	2.46		2.46	2.46	5(2)(m)
	(ii) Conservation of vulture, Ganges Dolphin, Kacchhua (Tortoise/ turtle) and other important species.	1.00		1.00	1.00	5(2)(m)
	Total-	3.46		3.46	3.46	
8	Construction of Residential and Official Buildings					
	Construction of Type-1, Type-2 & Type-3 quarters for frontline staff.	7.33		7.33	7.33	5(3)(e)
	Total-	7.33		7.33	7.33	



(FIGURES IN CRORE)

Sr. No.	COMPONENT	Approved by Executive Committee, National CAMPA				
		Approved Outlay of APO (2020-21)	Approved Outlay of Additional APO (2020-21)	Total approved outlay	Revised total approved Outlay	CAF Rules
1	2	3	4	5	6	7
9	Establishment, upgradation and Maintenance of Modern Nurseries and other planting stock production facilities for production of quality planting material					
	(i) Establishment of Nurseries at divisions level	1.26		1.26	1.26	5(3)(a)
	(ii) Strengthening of Research Centers for production of quality planting material					
	(a) Silviculturist Kanpur	2.50		2.50	2.50	5(3)(a)
	(b) Silviculturist Bareilly	2.02		2.02	2.02	5(3)(a)
	(c) Silviculturist Varanasi	1.25		1.25	1.25	5(3)(a)
	Total-	5.77		5.77	5.77	
10	Purchase and Maintenance of Equipments/Devices for Communication and Information Technology for the purposes of protection of forest and wildlife	9.73		9.73	9.73	5(3)(c)
11	Forest Certification and development of Certification standards.	0.44		0.44	0.44	5(3)(k)
12	Publicity-cum-awareness program on the various scheme being implemented from State Fund	0.50		0.50	0.50	5(3)(i)
13	Monitoring and Evaluation	1.00		1.00	1.00	5(3)(h)
	Total of NPV	207.47	170.01	377.48	239.17	
	Total (CA + NPV) Component	248.56	170.01	418.57	268.67	
IV	OUTLAY FOR THE USE OF ACCRUED INTEREST	23.44		23.44	3.33	6(a), 6(b)
	Total (CA+NPV+INTEREST) RS.	272.00	170.01	442.01	272.00	

4.4 Important features of the APO 2020-21

The main objective of UP CAMPA is to successfully implement the mandated site specific activities of compensatory afforestation laid down in approved forest land transfer proposals by Govt. of India. The APO of Compensatory Afforestation (CA) component in financial year 2020-21 for an amount of 29.50 crores for carrying out compensatory afforestation during 2020 rains, maintenance of CA Plantations of 2011 to 2019 and advance soil work for CA Plantations to be done 2021 rains.

In APO 2020-21 the work proposed under NPV component, the mainly focus on the activities for management of forest and wildlife in the State of Uttar Pradesh.



Activities like Artificial Regeneration (Non-CA Plantation-Plantation Under NPV) in degraded forest using latest information technology tools for effective planning, implementation and monitoring (PMS-Plantation Monitoring System & NMS-Nursery Monitoring System), Assisted Natural Regeneration (ANR) for improving the natural regeneration of forest, Soil and Moisture Conservation Work in forests (SMC) using GIS Technology (Ridge to Valley Approach), protection of plantation and forests, forest fire prevention and control operations, establishment up-gradation and maintenance of modern nurseries, Improvement of Wildlife Habitat and activities to reduce Man Animal Conflict, Construction of Residential Buildings for Frontline staff living in remote forest areas, etc. were under taken under NPV component by U.P. CAMPA.

For implementation of above activities under NPV component, an amount of Rs. 239.17 crores were approved in the APO 2020-21. Besides above an amount of Rs. 3.33 crores were approved under outlay for the use of accrued interest for smooth functioning of the official and related activities of State Authority.



CHAPTER-5

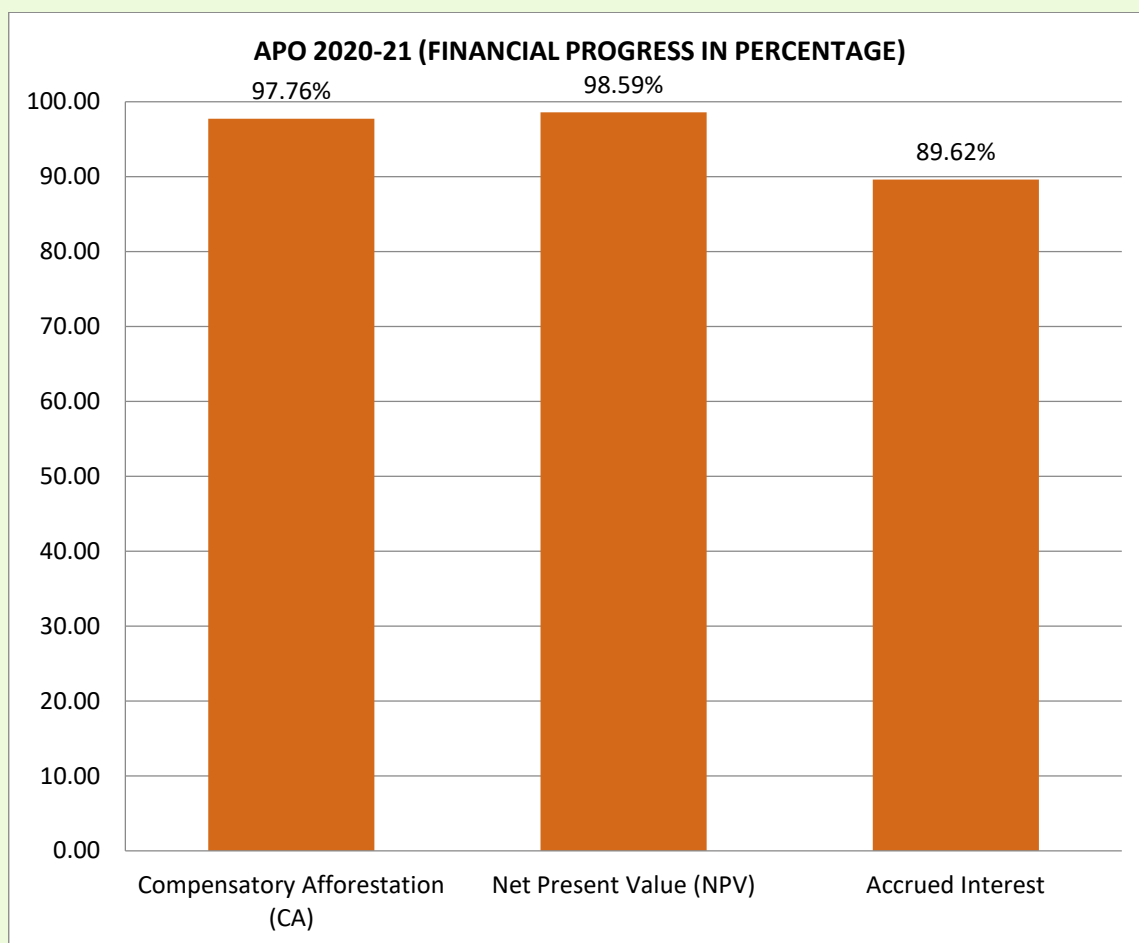
PROGRESS REPORT OF ANNUAL PLAN OF OPERATION 2020-21

5. Physical & Financial Progress

The summary of component wise financial achievements against approved outlay for APO 2020-21 are as follows:-

(Figures in Lacs)

S. No.	Component	Approved Amount	Released Amount to Working Units	Achievement
1	2	3	4	5
1.	Compensatory Afforestation (CA)	2949.66	2949.66	2883.64
2.	Net Present Value (NPV)	23917.34	22352.68	22036.83
3.	Accrued Interest	333.00	333.00	298.43
	Total-	27200.00	25635.34	25218.90



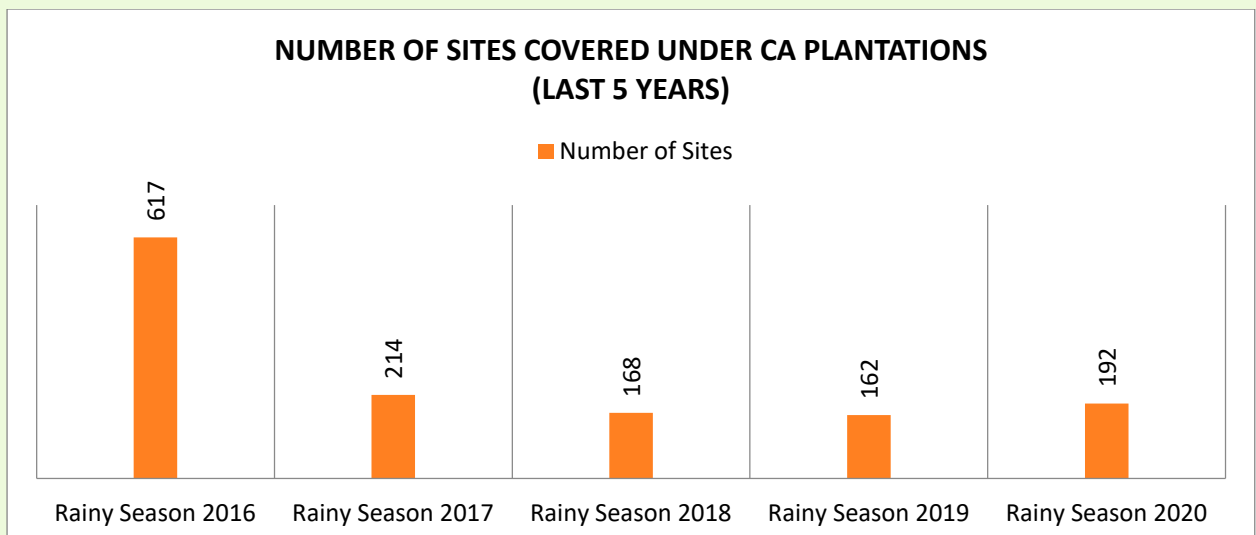
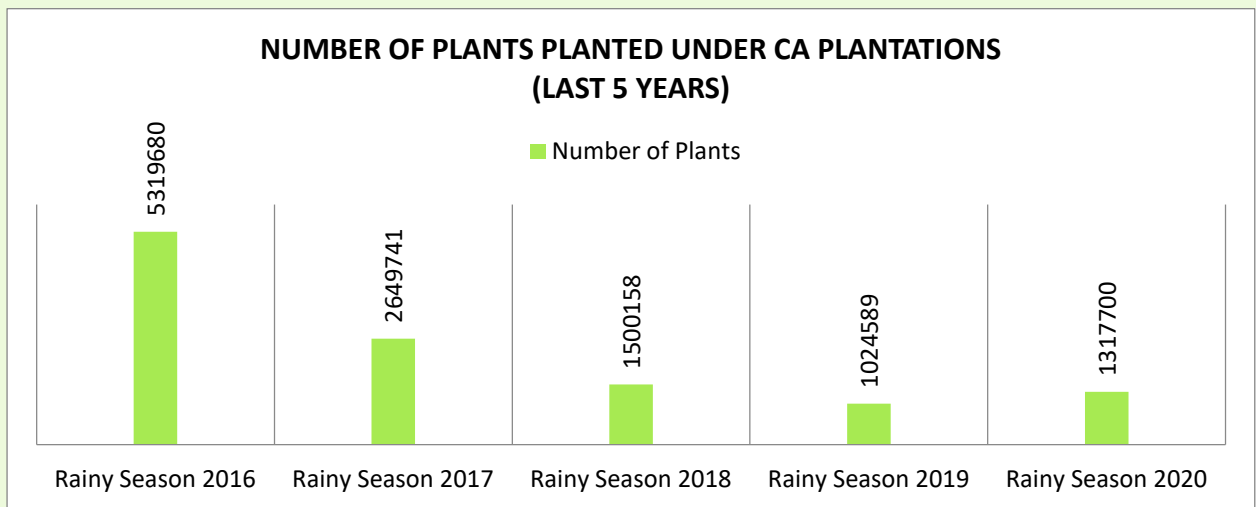


The component wise physical & Financial achievements against approved outlay for APO 2020-21 are as follows:-

5.1 Compensatory Afforestation (CA)

(Rupees in Lacs)

Component	Physical Target	Financial Target	Physical Achievement	Financial Achievement
1	2	3	4	5
Compensatory Afforestation during 2020 rains				
i. Normal/barbed wire fencing plantation (ha.)	1070.08	821.78	1070.08	814.85
ii. No. of plants (other than ha.) (No.)	66495		66495	
Total No. of Plants	1317700		1317700	
Advance Soil Work for planting 2021 rains				
i. Normal/barbed wire fencing plantation (ha.)	1023.29	780.26	1011.08	753.61
ii. No. of plants (other than ha.) (No.)	72612		72149	
Total No. of Plants	1320675		1295778	
Maintenance of CA Plantation from 2011 to 2019				
i. Normal/barbed wire fencing plantation (ha.)	14477.51	1347.62	14299.76	1315.18
ii. No. of plants (other than ha.) (No.)	888923		828180	





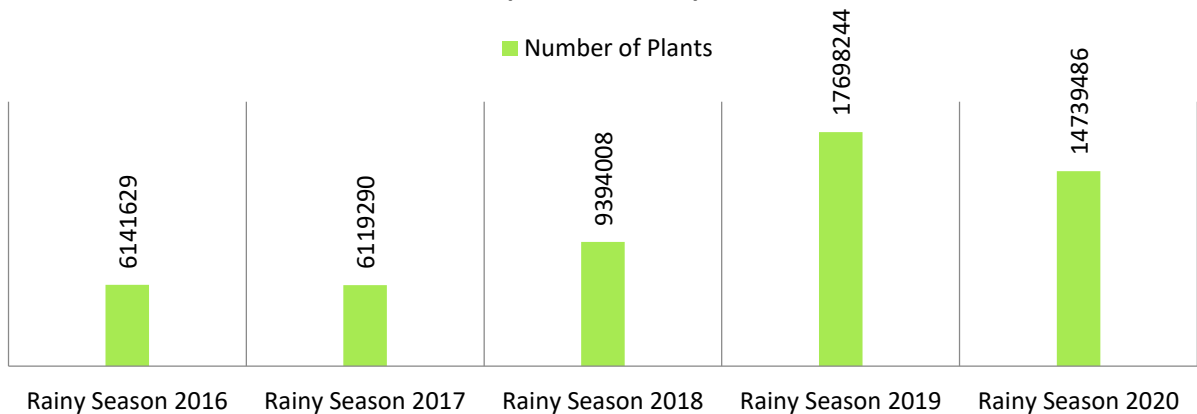
Activities under NPV

5.2 Artificial Regeneration (Non-CA Plantation)

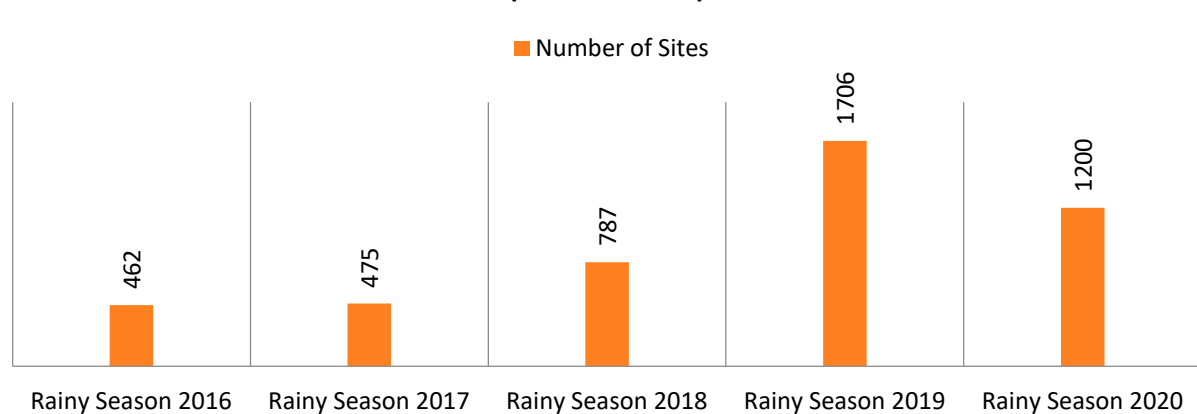
(Rupees in Lacs)

Component	Physical Target	Financial Target	Physical Achievement	Financial Achievement
1	2	3	4	5
Non-CA plantation year 2020				
(i) Normal Plantation	11574.86	3637.82	11574.86	3634.98
(ii) Plantation along the Ganges and tributaries				
Total No. of Plants	14739486		14739486	
Advance soil work for Non-CA plantation year 2021	21664.95	8105.54	21664.95	8059.07
Total No. of Plants	27415050		27415050	
Maintenance of Non-CA plantations	21116.70	3390.91	21008.99	3364.04

NUMBER OF PLANTS PLANTED UNDER NON-CA PLANTATIONS (LAST 5 YEARS)



NUMBER OF SITES COVERED UNDER NON-CA PLANTATIONS (LAST 5 YEARS)





Other Activities under NPV

5.3 ANR related works

(Rupees in Lacs)

Target		Achievement	
Physical (ha.)	Financial	Physical (ha.)	Financial
1	2	3	4
950.00	113.00	950.00	113.00

5.4 Soil & Moisture Conservation Works

(Rupees in Lacs)

Target		Achievement	
Physical (ha.)	Financial	Physical (ha.)	Financial
1	2	3	4
6343.00	887.36	6343.00	862.97

5.5 Protection of Plantations and Forests

(Rupees in Lacs)

Component	Units	Target		Achievement	
		Physical	Financial	Physical	Financial
1	2	3	4	5	6
(i) Survey demarcation and establishment of boundary pillars	Km.	4277.66	350.76	4277.66	350.63
(ii) Strengthening of forest roads	Km.	482.69	193.27	482.69	193.27
(iii) Enforcement work	LS		298.50		298.50
(iv) Installation and purchase of solar lights/solar lamp/solar torches in office/ residential/rest house premises. (No.)	Nos.	1797.00	100.00	1783.00	98.90
(v) Capacity building of frontline staff for the protection of forests and plantation	LS		50.00		50.00
Total-			992.53		991.30

5.6 Forest fire prevention and control operations

(Rupees in Lacs)

Component	Physical Target	Financial Target	Physical Achievement	Financial Achievement
1	2	3	4	5
Forest fire prevention and control operations				
(i) Purchase of state of art fire protection / management equipment (Nos.)	1230	100.00	1229	99.83
(ii) Construction of watch towers (Nos.)	22	125.00	22	124.48
(iii) Maintenance of watch towers (Nos.)	52	39.05	51	38.41
Total-		264.05		262.72



5.7 Improvement of Wildlife Habitat

(Rupees in Lacs)

Component	Physical Target	Financial Target	Physical Achievement	Financial Achievement
1	2	3	4	5
(i) Man-animal conflict reduction	LS	1390.35	LS	1386.96
(ii) Development of Dudhwa, Amangarh and Pilibhit Tiger Reserve	LS	500.00	LS	500.00
(iii) Development/Maintenance of Katarniaghat, Sohagibarwa, Sohelwa, Kaimoor, Kashi, Kachhua, Chambal and other wildlife sanctuaries.	LS	200.00	LS	200.00
(iv) Establishment of Anti-poaching surveillance and wildlife tracking system in Dudhwa Tiger Reserve	LS	75.00	LS	75.00
(v) Development of bird sanctuaries	LS	200.00	LS	199.92
(vi) Wildlife conservation and protection.	LS	18.00	LS	18.00
(vii) Immunization/vaccination of cattle around wildlife sanctuaries/ bird sanctuaries/national park	LS	14.76	LS	14.76
Total-		2398.11		2394.64

5.8 Bio-diversity Conservation

(Rupees in Lacs)

Component	Physical Target	Financial Target	Physical Achievement	Financial Achievement
1	2	3	4	5
(i) Development of Wetlands	7.00	245.69	7.00	244.17
(ii) Conservation of vulture, Ganges Dolphin, Kacchhua (Tortoise/ turtle) and other important species.	LS	100.00	LS	100.00
Total-		345.69		344.17

5.9 Construction of Residential and Official Buildings

(Rupees in Lacs)

Component	Physical Target	Financial Target	Physical Achievement	Financial Achievement
1	2	3	4	5
Construction of quarters for frontline staff –				
Type-1	44		43	
Type-2	31	733.22	30	695.54
Type-3	10		09	
Total-	85	733.22	82	695.54



5.10 Establishment, up-gradation and Maintenance of Modern Nurseries and other planting stock production facilities for production of quality planting material

(Rupees in Lacs)

Component	Physical Target	Financial Target	Physical Achievement	Financial Achievement
1	2	3	4	5
(i) Establishment of Nurseries at divisions level (Nos.)	29.00	125.86	29.00	125.86
(ii) Strengthening of Research Centers for production of quality planting material				
(a) Silviculturist Kanpur (LS)	LS	90.95	LS	72.67
(b) Silviculturist Bareilly (LS)	LS	60.95	LS	60.95
(c) Silviculturist Varanasi (LS)	LS	40.60	LS	18.00
Total -		318.36		277.48

5.11 Other Components

(Rupees in Lacs)

Component	Physical Target	Financial Target	Physical Achievement	Financial Achievement
1	2	3	4	5
1. Purchase and Maintenance of Equipments/ Devices for Communication and Information Technology for the purposes of protection of forest and wildlife (LS)	LS	972.59	LS	943.42
2. Forest Certification and development of Certification standards. (LS)	LS	43.50	LS	43.50
3. Publicity-cum-awareness program on the various scheme being implemented from State Fund (LS)	LS	50.00	LS	50.00

The detailed component wise/division wise physical & financial progress report are given in **Annexure-1 to 31.**



PART - III

CHAPTER-6

GLIMPSES OF WORKS CARRIED OUT UNDER UP CAMPA

6.1 CA Plantation

Division Name	Sohelwa WL, Balrampur	Range Name	Barhawan
Site Name	Lauki, Room -1	Work Details	CA Plantation 2013-14
Geo co-ordinates	27 41 32.69 N, 82 17 55.4 E	Area (ha.)	1.00



Division Name	Sitapur	Range Name	Sitapur
Site Name	Sitapur range	Work Details	CA Plantation 2010-11
Geo co-ordinates	N27 24 475 E80 48 467	Area (ha.)	413.2 to 431.62 km. (Road)





Division Name	Agra	Range Name	Kirawali
Site Name	Raunakta Forest Block plantation	Work Details	CA Plantation 2015-16
Geo co-ordinates		Area (ha.)	10.00 ha



Division Name	Agra	Range Name	Itamadpur
Site Name	Agra Aligarh Road Plantation	Work Details	CA Plantation 2015-16
Geo co-ordinates		Area (ha.)	10.81 ha, 2920 plants





Division Name	Bareilly Forest Division	Range Name	Bareilly
Site Name	Fauzi Padav, Bhojipura-Bareilly	Work Details	Plantation
Geo co-ordinates		Area (ha.)	4.00



Division Name	Basti Forest Division	Range Name	Haraiya
Site Name	NH-28 (147.40 to 153.40km.)	Work Details	CA Plantation 2020-21
Geo co-ordinates	N25.746498, E79.248017	Area (ha.)	20.00





Division Name	Ghazipur	Range Name	Saidpur
Site Name	Bhatni Aurihar, Rail marg	Work Details	Plantation 2017-18
Geo co-ordinates		Area (ha.)	0.29



Division Name	Renukoot	Range Name	
Site Name	Belhathi	Work Details	Plantation 2017-18
Geo co-ordinates		Area (ha.)	12.72





6.2 Non-CA Plantation

Division Name	Ayodhya	Range Name	Ayodhya
Site Name	Samda (Moiya Kapoorpur)	Work Details	Non CA Plantation 2018-19
Geo co-ordinates	N26 43 821, E082 01 192	Area (ha.)	10.00



Division Name	Ayodhya	Range Name	Ayodhya
Site Name	Samda (Moiya Kapoorpur)	Work Details	Non CA Plantation 2018-19
Geo co-ordinates	N26 43 765, E082 01 217	Area (ha.)	10.00





Division Name	Shahjahanpur	Range Name	Shahjahanpur
Site Name	Gandhi Upwan	Work Details	Non-CA Plantation 2019-20
Geo co-ordinates	27°53'58, 79°54'54'	Area (Nos.)	6600





Division Name	Chitrakoot	Range Name	Karvi
Site Name	Siddhpur	Work Details	Non-CA Plantation 2020-21
Geo co-ordinates	N25°09'141 E080°55'128	Area (Nos.)	20.00



Division Name	Sitapur	Range Name	Mahmoodabad
Site Name	Mahmoodabad	Work Details	Plantation in Brickguard
Scheme	Non-CA (Forestry intervention for Ganga)	Area (ha.)	5.00





Division Name	Kashil Wildlife	Range Name	Rajpath
Site Name	Chakiya Latifshah Marg	Work Details	Construction of Brick guard
Geo co-ordinates	N25°09'141 E080°55'128	Area (Km.)	11.00

चकिया लतिफशाह नौगढ़ मार्ग पर किमी 03 से 11 किमी पर ब्रिकमगार्ड निर्माण कैम्पा योजना, रेंज-राजपथ



Division Name	Renukoot	Range Name	Pipari
Site Name	Belhathi, Comp. No. 7	Work Details	Plantation 2018-19
Geo co-ordinates		Area (hectare)	12.72





6.3 Advance Soil Work

Division Name	Badaun	Range Name	Sahaswan Range
Site Name	Taranagla Van khand-2	Work Details	Non CA ASW
Geo co-ordinates		Area (Nos.)	10.00



Division Name	Kaimoor Wildlife	Range Name	
Site Name	Bhaiswar	Work Details	ASW 2018-19
Geo co-ordinates		Area (Nos.)	10.00





Division Name	Obra	Range Name	Kon
Site Name	Uttari Saraiya 10	Work Details	ASW 2019-20
Geo co-ordinates		Area (Nos.)	15.00



Division Name	Kaimoor	Range Name	Haliya
Site Name	Chaura-2 Ponari-I	Work Details	Non-CA ASW 2019-20
Geo co-ordinates	N24.6022056 E 82.41832500	Area (Nos.)	15.00





6.4 ANR Works

Division Name	Banda	Range Name	Banda
Site Name	Dadhwamanpur- I, II van block	Work Details	ANR work 2021
Geo co-ordinates		Area (ha.)	100.00



Division Name	Banda	Range Name	Banda
Site Name	Katra Kalinjar van block	Work Details	ANR work 2021
Geo co-ordinates		Area (ha.)	25.00





6.5 Soil and Moisture Conservation Works

Division Name	Lalitpur	Range Name	Matateela
Site Name	Bijrautha Forest Block	Work Details	2020-21
Geo co-ordinates	N24 57 10.3, E078 22 59.0	Area (ha.)	300.00





Division Name	Hamirpur	Range Name	Hamirpur
Site Name	Misripur Forest Block	Work Details	SMC 2019-20
Geo co-ordinates		Area (ha.)	100.00



Division Name	Hamirpur	Range Name	Hamirpur
Site Name	Misripur Forest Block	Work Details	SMC 2019-20
Geo co-ordinates		Area (ha.)	100.00





Division Name	Lalitpur	Range Name	Lalitpur
Site Name	Dudhai, Poorvi Van Block	Work Details	2019-20
Geo co-ordinates	N24 23 54 48, E78 23 06 88	Area (ha.)	300.00



Division Name	Pilibhit Tiger Reserve	Range Name	Mala
Site Name	Dhamela Room 122	Work Details	Construction of Pond
Geo co-ordinates	28 31 52.59, 079 57 40.02	APO	2020-21





Division Name	Siwalik, Saharanpur	Range Name	Shakumbhari
Site Name	Badkala Rau	Work Details	SMC 2021-22
Geo co-ordinates		Area (ha.)	



6.6 Construction of Residential and Official Buildings

Construction of Patrolling Chaukis for Frontline Staff



SIWALIK DIVISION, SAHARANPUR





AMANGARH TIGER RESERVE, BIJNORE

Division Name	SF Bijnor	Range Name	Amangarh
Site Name	Kehripur	Work Details	Type -1 (Forest Guard)
Geo co-ordinates	N 29 23 05.7 E 78 49 03.7		



Division Name	Siwalik	Range Name	Badkala, Badshahibagh
Site Name	Badshahi range campus	Work Details	APO 2020-21, Type-2 Awas
Geo co-ordinates	30 19 19.49 77 38 46.37		





Division Name	Siwalik	Range Name	Badkala, Badshahibagh
Site Name	Karaundi beet	Work Details	APO 2020-21, Type-2 Awas
Geo co-ordinates	30 22 30.77 77 36 21.51		



Division Name	Siwalik	Range Name	Badkala, Badshahibagh
Site Name	Karaundi beet	Work Details	APO 2020-21, Type-1 Awas
Geo co-ordinates	30 22 30.77 77 36 21.51		



6.7 Habitat Improvement Work in Saman Sanctuary

Division Name	Chambal Sanctuary, Agra	Range Name	Saman Bird Sanctuary, Mainpuri
Site Name	Saman	Work Details	Weed Eradication
Geo co-ordinates	N 27°01'24.20" , E079°11'22.40"		



Before Work



After Work



Construction of Water Hole in Sohelwa



Before Work



During Work



After Work



Construction of Water Hole

Division Name	Kaimoor Wildlife	Range Name	Mahaveer Swami
Site Name	Devgarh block	Work Details	Construction of water hole
Geo co-ordinates	N 24 30 57.0 E 78 14 82.2	APO	APO 2018-19 (NPV)



Division Name	SF Bijnor	Range Name	Amangarh Tiger Reserve
Site Name	Jaspur, Room-17	Work Details	Construction of water hole
Geo co-ordinates	N 29 22 05.5 E 78 50 19.2	APO	





Division Name	Kashi Wildlife	Range Name	Chandraprabha
Site Name	Baliyari Beet, Shikarganj 10	Work Details	Construction of Kajwe
Geo co-ordinates	N24 55 39-20 E83 09 20-05	APO	APO 2019-20 (NPV)



Division Name	Kashi Wildlife	Range Name	Chandraprabha
Site Name	Bhagwan das gardi marg to ghusuriya via budanmarg	Work Details	Repair of forest road
Geo co-ordinates	N24 57 42-60 E83 09 66-50	APO	APO 2019-20 (NPV)





Construction of Pul-Pulia

Division Name	Dudhwa Tiger Reserve	Range Name	Sathiyana
Site Name	Sathiyana to kaima kaima road -III	Work Details	Construction of Pul-pulia
Area	20 Mtr.	APO	2018-19

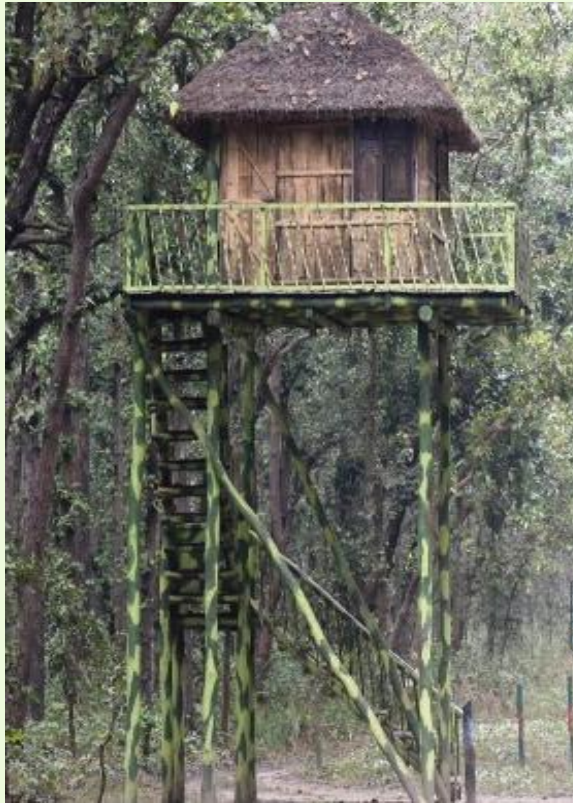


Division Name	Dudhwa Tiger Reserve	Range Name	Sathiyana
Site Name	Phens road, Bhadraula	Work Details	Construction of Pul-pulia
Area	10 Mtr.	APO	2018-19

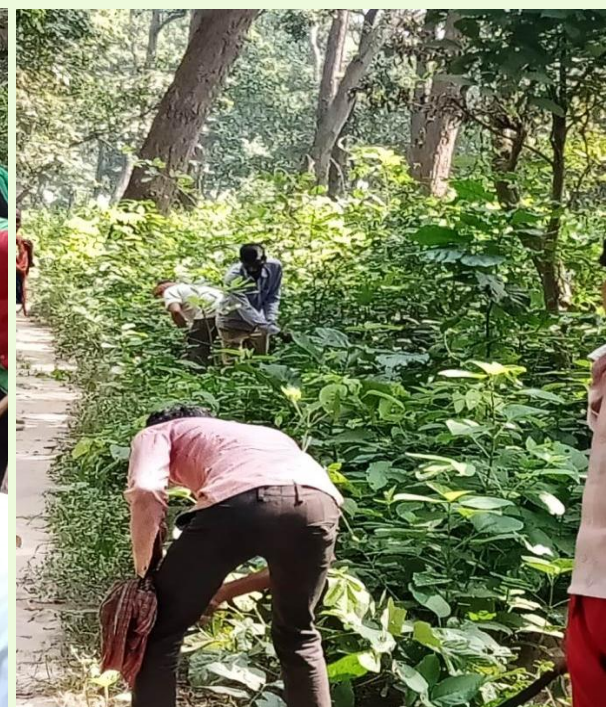


6.8 Forest Fire Prevention and Control Operations

Division Name	Pilibhit Tiger Reserve	Range Name	Mala
Site Name	Dhamela Room 124	Work Details	Construction of Watch Tower
Geo co-ordinates	28 36 45.07, 079 59 82.28	APO	2020-21



Division Name	Pilibhit Tiger Reserve	Range Name	Haripur
Site Name	Kheeri branch river to Bheera Chauraha	Work Details	Maintenance of fire lines
Geo co-ordinates	N-28°32'41.4 E-80°15'32.5	APO	2020-21



Construction of Watch Tower



Mahof Range, Malasi, Comp. 100



Mala Range, Dhamela, Comp. 100



Mahof Range, Malasi, Comp. 100



SHOT ON OPPO



6.9 Man-animal Conflict Reduction

Division Name	Shahjahanpur	Range Name	Shahjahanpur
Site Name	Cantt area	Work Details	Man animal conflict reduction
Geo co-ordinates		APO	2019-20



Mala Range, Grassland Management



Division Name	Pilibhit Tiger Reserve	Range Name	Mala
Site Name	Mala Room 127	Work Details	Grassland management
Geo co-ordinates	28 36 36.9, 79 57 33.5	APO	2020-21, 10ha.



Division Name	Pilibhit Tiger Reserve	Range Name	
Site Name	Malasi Room 98	Work Details	Grassland management 2018
Geo co-ordinates		Area (ha.)	50.00





6.10 Improvement of Wildlife Habitat

Division Name	Lucknow	Range Name	Kukrail
Site Name	Kukrail	Work Details	Ghariyal Punarwas Kendra
Geo co-ordinates		APO	2020-21





Division Name	Gautambuddhnagar (Noida)	Range Name	
Site Name	Okhla Bird Sanctuary, Noida	Work Details	WATER ATM AT GATE NO 1
Geo co-ordinates		APO	2020-21



Division Name	Gautambuddhnagar (Noida)	Range Name	
Site Name	Okhla Bird Sanctuary, Noida	Work Details	ECO LOG TOILET at T-Point
Geo co-ordinates		APO	2020-21





DEVELOPMENT OF DUDHWA TIGER RESERVE



205 Infrared Camera Trap



15 Solar Power Unit & 12 Solar Water Pump



Backpack Leaf Blower



Pressor Machine operate by Tractor 5

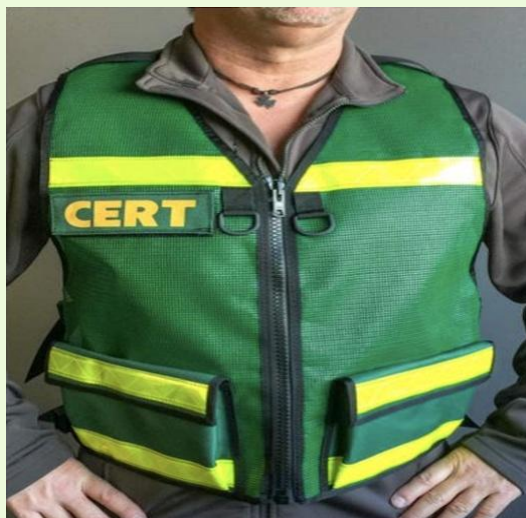


Fire Ball









2 km. Solar fencing


RESCUE EQUIPMENTS AND TOOLS



PACKED WITH SAFETY

FEATURES

-  STUN GUN
-  RECHARGABLE BATTERY
-  3-ZONE LIGHTING
-  PANIC BUTTON
-  USB PHONE CHARGING PORT
-  WILDERNESS SURVIVAL KIT





6.11 Organizing Important Days and Spreading Environmental Education Among School Children

Division Name	Rastriya Chambal, Agra	Range Name	Bah Range
Site Name	Nandgawan	Work Details	Environmental Seminar
Geo co-ordinates		APO	2018-19



Division Name	Sitapur	Range Name	Biswan
Site Name	Bhinaini	Work Details	Environmental Seminar
Geo co-ordinates	N27 28 487 E81 02 484	APO	2018-19





6.12 Immunization/Vaccination Of Cattle Around Wildlife Sanctuaries/Bird Sanctuaries/ National Park

Division Name	Raebareli	Range Name	Samaspur
Site Name	Samaspur Bird Sanctuary	Work Details	Vaccination
Geo co-ordinates		APO	2020-21



Division Name	Kannauj	Range Name	
Site Name	Lakh Bahosi Bird Sanctuary	Work Details	Vaccination
Geo co-ordinates		APO	2020-21





6.13 Training

Office Name	FTI, Kanpur	Range Name	
Site Name	FTI, Kanpur	Work Details	Training
Geo co-ordinates		Year	2020



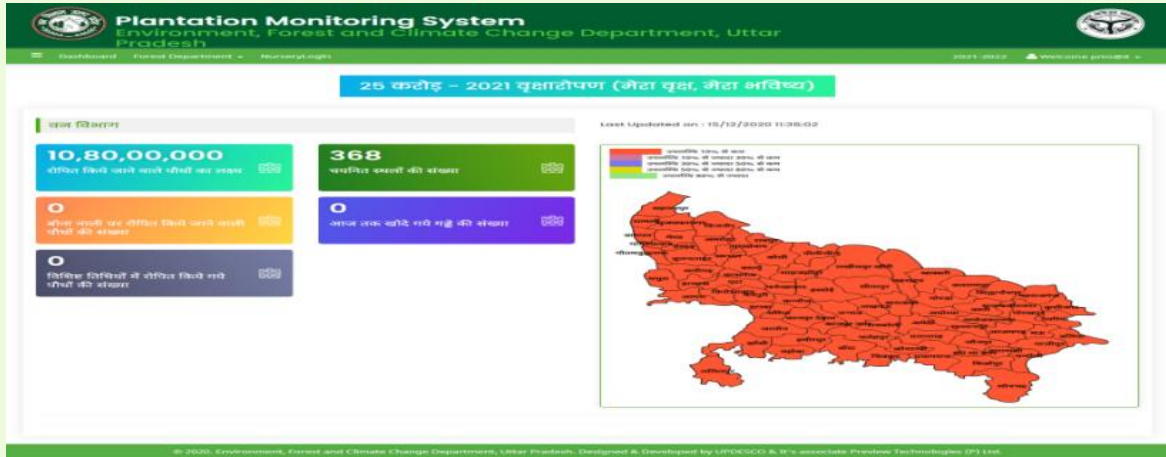
Division Name	Pilibhit Tiger Reserve	Range Name	Deoria
Site Name	Deoria	Work Details	Seminar
Geo co-ordinates		Year	2018-19



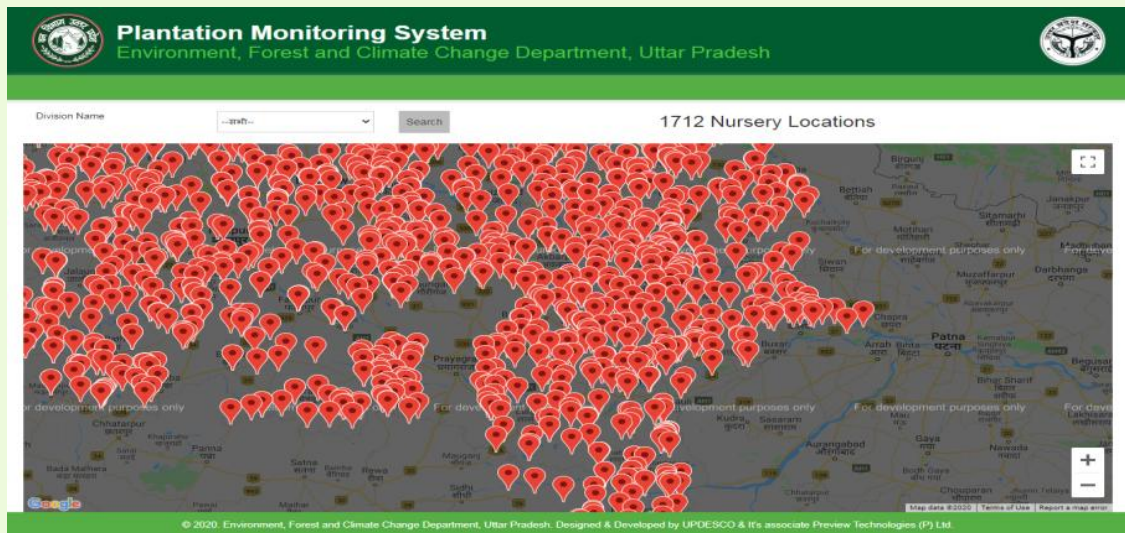


6.14 Software Developed by IT

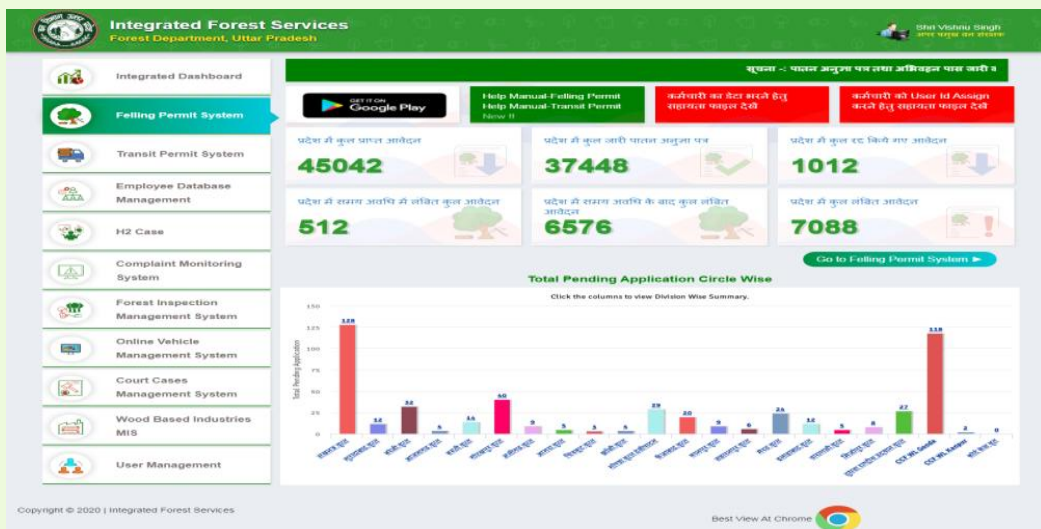
Office Name	APCCF, IT	Work Details	Software develop
-------------	-----------	--------------	------------------



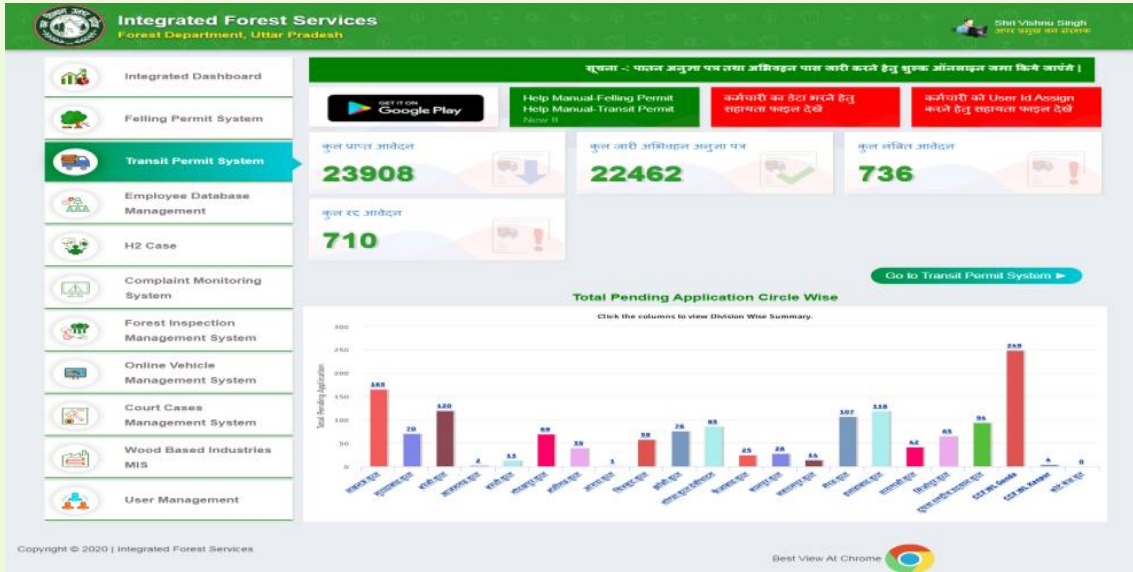
Plantation Monitoring System



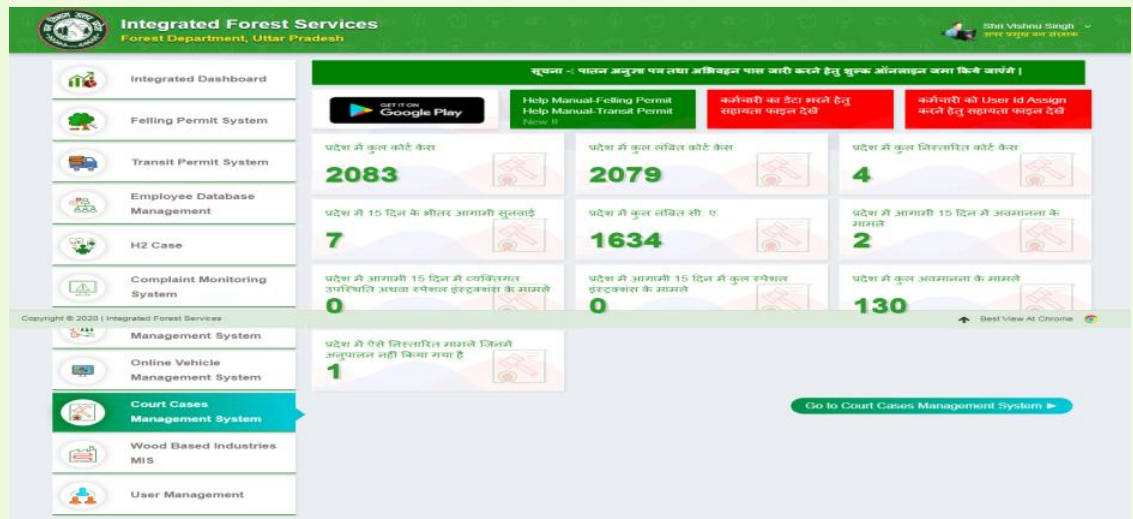
Nursery Locations on Google Map



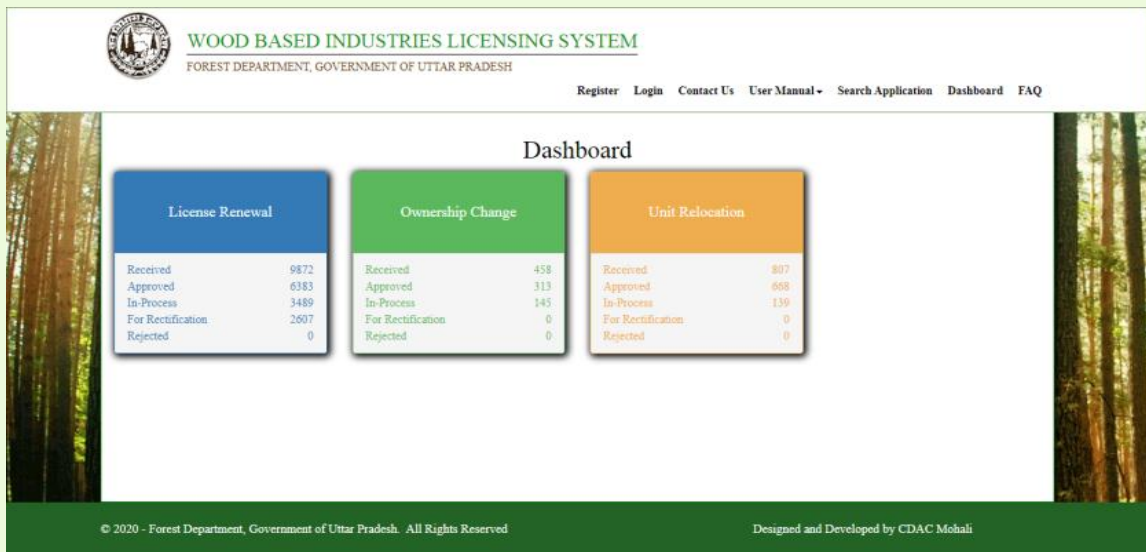
Felling Permit Dashboard



Transit Permit Dashboard



Court Case Monitoring System



Wood Based Industries Licensing System



PART - IV

CHAPTER-7

MONITORING MECHANISM

Monitoring of works being carried out under CAMPA fund is very important to ensure effective implementation of CAF Act, 2016 and CAF Rules, 2018. As per rules 5(3)(h) of CAF Rules, 2018 independent concurrent monitoring and evaluation and third party monitoring of various works undertaken from state fund should be carried out. In UP CAMPA the monitoring and evaluation activity is being carried out concurrently and as well as through third party. The details of monitoring and evaluation activity are as follows:-

7.1 Concurrent Monitoring & Evaluation**7.1.1 Monitoring by supervisory officers of field & senior Forest officers**

In U.P., the plantation works under CAMPA, are being executed by Divisional Forest Officer under constant supervision of Conservator and CCFs of field.

Apart from these senior officers (APCCFs & CCFs level) are nominated as Nodal officer for each district to coordinate monitoring of plantations being done the districts.

7.1.2 Regular counting & monitoring of survival of plants in plantation

As per the directions given by UP CAMPA Executive Committee in U.P. all CAMPA plantations are surveyed by team constituted by DFO and survival percentage is ascertained by physical counting. This survey is done 2 times in every year (on 30th June & 31st December) and result is recorded in counting register of the plantation.

7.1.3 Independent Monitoring and Evaluation by Monitoring and Evaluation wing of State Forest Department

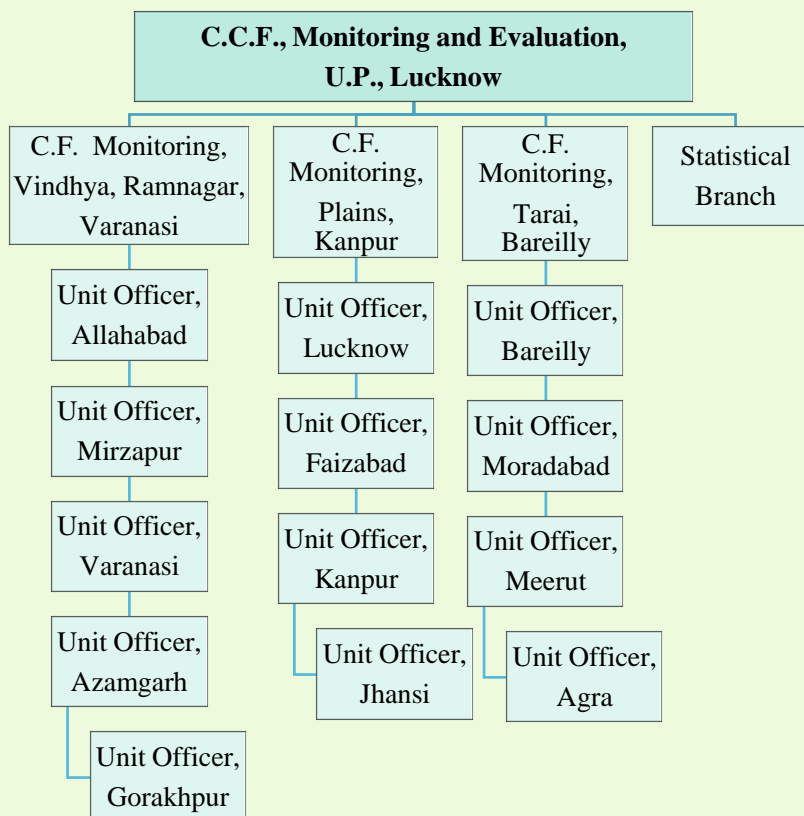
To emphasize the effective monitoring and evaluation of plantation works under the social forestry scheme of World Bank Monitoring and Evaluation cell was established in 1982. This office works under the control of chief forest conservator, monitoring evaluation which gives a firm dimension and base by proper guidance to the programs. Monitoring and Evaluation is conducted every year on random sampling bases by surveying three year old departmental tree plantations, besides this compilation of information regarding tree plantations and nursery is done at regular intervals.

(i) Organizational structure

In Uttar Pradesh forest department Monitoring and Evaluation wing was constituted in 1982 vide G.O. No. 2939/14-4-82-660/81 Dated 13.07.1982. The basic purpose of constitution of this wing/office is regular monitoring and evaluation of different forestry activities i.e. advanced soil works, plantations and nurseries, carried out under social forestry and other schemes, so that purpose of the schemes can be served fully.



Presently, in this wing there are three posts operational at the level of conservator of forests, monitoring under which each, units headed by range forest officers are working at circle levels. At headquarter level there is a statistical branch in which additional statistical officer and assistant statistical officer are working. The organizational structure of Uttar Pradesh forest department Monitoring and Evaluation wing is as under:-



(ii) Surveying/Monitoring Practices

Following practices were being followed pursuant to standing order No 138/29-8-2 dated 19.10.2012 in respect of monitoring and evaluation of advance soil works, nurseries and plantations by monitoring and evaluation wing of U.P. Forest department:-

A. Advance Soil work

Based on random sampling, 20-25% of the whole area is taken up for survey in respect of monitoring and evaluation which is conducted between Aprils to June every year.

B. Nursery

While conducting monitoring and evaluation related survey regarding advance soil work one substantially big nursery of the selected division is taken up for monitoring and evaluation.

C. Plantation



All 3 years old departmental plantations, carried out in all the schemes are taken up for monitoring and evaluation based on random sampling with 20-25% sampling intensity.

With a view to make monitoring and evaluation of plantations more effective, U.P. Forest department vide standing order NO 157/29-8-2 dated 22.11.2017 issued from the office of Principal Chief Conservator of Forests, Evaluation has issued instructions. These instructions are being complied up on religiously, some of the salient points of these instructions are as under:-

- A.** Three year old plantations would be listed based on schemes and ranges so that range wise stratum can be prepared for the division. Similarly range wise strata for advance soil work conducted every year and one big nursery of every range would be prepared for division.
- B.** 20% of the plantations would be chosen on random sampling which will be executed by the help of computer based on “random number generator online”.
- C.** Plantation monitoring work would be conducted between Octobers to march.
- D.** The proposed visit of the monitoring team is informed to the concerned Divisional Forest Officer and Conservator of Forests so that all the concerned documents in updated condition can be put up before the surveying/monitoring team.
- E.** After surveying/monitoring the team puts up the report (when ASW/Nursery/Plantation are not found up to the mark as per norms) before the concerned DFO for seeking his response/reply. DFO sends his response/reply to CCF monitoring and evaluation, U.P. in respect of the findings of monitoring team, accordingly CCF monitoring recommends to the competent level for disposal of the issue.

The summary of surveying and monitoring of CAMPA Plantations, conducted in years 2013-14, 2014-15 & 2015-16 by monitoring wing of the State is as under:-

S. No.	Plantation Year	Area (ha.)	No. of plants planted	No. of plants surviving	Survival Percentage
1	2	3	4	5	6
1	2013-14	539.53	510111	374049	73.33
2	2014-15	18.94	7426	5673	76.39
3	2015-16	1055.29	1202436	951462	79.13



7.1.4 Online Monitoring System

The UP State has developed software for online monitoring of plantation and nursery work. The PMS (Plantation Monitoring System) is being used to monitor the execution of various activities relating to plantation. Each plantation site of the state is entered in specially designed software for monitoring for plantation (PMS) and the basic data, polygon; photographs of various stages are uploaded by the field unit.

7.2 Third Party Monitoring

7.2.1 NABARD consultancy services Pvt. Ltd.

This Monitoring and evaluation aims at monitoring, assessment & evaluation of works carried out by the forest divisions, funded by UP CAMPA through physical verification. Through open contract, the work of 3rd Party Monitoring & Evaluation of CAMPA scheme for the block period 2011-12 to 2013-14 was awarded to NABARD Consultancy Services Pvt. Ltd. (Wholly-Owned subsidiary of NABARD) vide CCF/CEO CAMPA, U.P. letter no. 1728/3-1(Third Party Assessment) Lucknow dated 29.01.15.

(i) The Scope of work included

- Field Survey was to assess survival of plantations and evaluate other works as per the norms of the State Government/ CAMPA guidelines.
- Physical inspection of the plantations to assess:
 - Survival percentage of planted saplings, site wise (number per species planted)
 - Parameters like growth (average height and girth) based on ocular observation
- Recording of geo coordinates and develop the geo referenced data base at State CAMPA with photographic evidence from field sites
- Impact evaluation of NPV work and other infrastructure activity were taken up exhaustively in all ranges visited (evaluation formats provided by FD)

(ii) Approach and Methodology (Modus Operandi) adopted in the study were,

(a) Sampling:

10% of all the plantations carried out under Compensatory Afforestation were taken up for evaluation. The sampling scheme followed was stratified random sampling with the Division of plantation and year of plantation as the strata. The NPV work and other infrastructure activity were taken up exhaustively in all ranges visited.

In each of the plantation sites sampled, data was collected in pre designed formats in order to record the details regarding location, source of seedlings, type of plantation, species used, model and spacing, survival, average girth and height, details and quality of protection measures taken, record maintenance, overall rating etc.

(b) Data Collection:

The evaluation survey included both primary and secondary data collection.



- **Primary data collection** was done by field monitors by physical measurements and observations in sample sites according to pre designed formats. Data pertaining to area, location, and species planted their numbers and survivability, height and diameter of plants, fencing and other maintenance activities, protection from fire and biotic pressure, site suitability, mandays generated maintenance of records, overall performance etc. were collected.
- **Secondary data** i.e. official documents and records like plantation journal, work sanction order, budget allocations were collected from Forest Department offices at state/circle/ division/ range levels.

(iii) Monitoring and Evaluation Report:

(a) Plantation works -

As per the final report of the third party monitoring given by NABCONS (Wholly-Owned subsidiary of NABARD) the average survival percentage for the year wise plantation (at the time of survey year 2016) was as follows –

Plantation Year	2011	2012	2013	2014
Survival %	73.01%	72.50%	74.38%	77.33%

(b) NPV and Other Infrastructure works

- a. **Solar Units:** All the solar units' installed in the locations were provided from NEDA. The overall ratings for all the sample sites were good. The local people/ local staff reported that in some locations, these solar units have been a great help to power cuts. As some places solar units require maintenance work.
- b. **Staff Quarters:** Quality of construction of the quarters is good and very good, Most of them are in good condition and staff are residing under these quarters. The overall rating for all the sample sites were good.
- c. **Base Camps:** Base Camps constructed in 13 locations were as per specifications provided. All base camps were constructed using brick and mortar. No damage were observed during visit. All the camps were occupied by the forest officials. The overall rating for all the sample sites were good. The local staff reported that they are now more comfortable and safe in *pakka* house.
- d. **Watch Towers:** All 16 watch towers constructed were as per specifications and quality of construction was good. The overall rating for all the sample sites were good. The local people/ local staff reported that all the watch towers are being used very well.
- e. **Water Holes:** Water holes were constructed in accordance with the specifications. No serious damage were observed. The overall rating for all the sample sites were good. The local people/ local staff



reported that during summer season visibility of the wild life can be seen at these water holes.

- f. **Soil & Water Conservation Structures:** All the soil & water conservation structures monitored were in Bainpura range of Agra division. All the *pucca* structures were according to the specifications and construction quality was also good. The overall rating for all the sample sites were good. The local people/ local staff reported that soil erosion has reduced and water table has increased in all the sample sites surveyed.

(iv) Over all Findings

The evaluators had the opportunity to meet and interact with a good number of different groups and individual and officials. Overall findings of the Third Party Monitoring team can be summarized as under:-

- i. It was observed that funds received from Ad-hoc CAMPA have been utilized in various activities as per the annual plan of operation (APO) duly approved by Steering Committee Chaired by Chief Secretary, Govt. of Uttar Pradesh.
- ii. Under CAMPA scheme implementing agencies have made sincere efforts to carry the plantations raised under Compensatory Afforestation as per the conditions imposed by the Central Government/State Government or by Hon'ble court (if any). According to NABCONS report almost all plantations are according to the State Government norms in respect of survival and health of the plants. The species planted were found to be suitable to the plantation sites. The spacing of plantations is as per the plantation-model adopted.
 - a. Some more attention is required to be given for records up keeping.
 - b. All the quantitative and qualitative aspects of the project along with the mechanism and functioning found satisfactory. In sum, the prime task of State CAMPA – "Regenerating natural forests and building" is in right direction. The overall implementation and performance of the CAMPA SCHEME in Uttar Pradesh is quite satisfactory.

7.2.2 Forest Survey of India, Dehradun

As per Government order Environment, Forest and Climate Change section-5, no. 272/14-5-2019-03/2019 dated 16.05.2019 and as per the decisions of the committee chaired by PCCF, UP dated 11.07.2019, FSI Dehradun was nominated as third party agency for monitoring of plants done in 2019-20 (which includes CAMPA CA & Non-CA Plantations) carried out by UP.

FSI carried out field work by 24 field crews between 18th Feb, 2020 to 23rd Feb, 2020. Total 4078 sample plots spread over all the district of the State for field survey. The Third Party Monitoring of 2019-20 plantations by FSI included 793.11 ha CA Plantations & 14281.41 ha Non CA Plantations done under CAMPA.

The main findings of the Third Party Monitoring are as follows:-



- 1- Overall survival percentage of the planted saplings at the State level has been observed as 90.44%.
- 2- The highest survival percentage of 98.38% has been observed in Bundelkhand zone followed by Western Plain zone (94.21%) and North Eastern Plain zone (92.42%).
- 3- The highest survival percentage has been observed in Chitrakoot circle (98.47%) followed by Jhansi (98.10%) and Basti circle (95.75%)

7.2.3 Central Agro Forestry Research Institute, Jhansi, Uttar Pradesh

The Central Agro Forestry Research Institute, Jhansi, Uttar Pradesh (a multi-disciplinary premier Research Institute of Indian Council of Agricultural Research (ICAR)) was interested the task and carrying out third party monitoring as well as socio-economic ecological study of impact of soil moisture conservation works executed, under NPV component of UP CAMPA in Bundelkhand region of Uttar Pradesh. The CAFRI, Jhansi conducted the study from April 2019 to Sept, 2021, the field enquiry / survey was conducted during July, 2021 to Sept, 2021. The team visited selected sites in Jhansi, Lalitpur, Orai, Chitrakoot, Banda, Hamirpur and Mahoba divisions of Bundelkhand forest zone.

The main finding of the study are as follows:-

- i. Almost all the water harvesting structure were found with stored water and they are serving as resource for drinking water for wildlife and local livestock.
- ii. Water level has increased upto 0.5 metre to 1.5 meter in open wells located nearby the interventions.
- iii. Availability of soil moisture conservation for longer time has helped in natural regeneration and increased vegetation cover in the treated areas.
- iv. Due to water harvesting structure soil loss, run off loss and nutrient loss has reduced drastically in the treated area.
- v. Man – animal conflict has decreased in forest fringe areas as wild animal are getting the drinking water in treated areas.
- vi. These activities has not only approved and stabilized the food production system in the forest but also has reduced the impact of climate variability and rain fall irregularities, thereby improving house hold resilience.

Overall Assessment-

Based on the information provided by the forest department and based on the observations, the interventions implemented under CAMPA activities can be rated as **very good**.

7.2.4 FUTURE STRATEGY FOR THIRD PARTY MONITORING AND EVALUATION OF WORKS DONE UNDER CAMPA

Pursuant to the above decision, for third party monitoring of CA plantations (2011-12 to 2018-19), plantations under NPV (2016-17 to 2018-19) and NPV works (2011-12 to 2018-19), proposal for FSI, Dehradun as third party agency has been sent before



committee, chaired by PCCF, Working Plan and Monitoring, constituted for this purpose. As per the recommendations of the committee and approval of the same by PCCF & HOFF, UP, a proposal for third party monitoring of CAMPA works, as mentioned above has been sent to Director General, Forest Survey of India, Dehradun for submitting the concept note for third party monitoring.

Forest Survey of India, has communicated that protocol for monitoring of CAMPA activities is being developed with help of NIC (National Information Center). Once the protocol and application are in place, Forest Survey of India will be able to execute third party monitoring of CAMPA works in UP.

FSI has also communicated that the concept note will be submitting after completing the above work. Once the concept note of FSI is received by the State the further action will follow.

7.2.5 Accounts & Audit

Before implementing the provisions under CAF Act, 2016 & CAF (Accounting Procedure) Rules, 2018, UP CAMPA maintains the accounts in Double Entry Accounting System. The implementing agencies i.e. forest divisions and other offices follow the prevailing system of accounting as in Forest Department. The audited balance sheets of annual accounts (upto years 2019-20) have been prepared by CAG Empanelled CA firms.

After getting approval from Steering Committee of UP CAMPA above balance sheets have been sent to the office of the Accountant General, Uttar Pradesh for account audit.

For inclusion in the year ending 31 March, 2018, the review audit has been carried out by office of Accountant General, Uttar Pradesh. In the above review audit, the audit objections pointed out by the audit team were sent to the Public Accounts Committee, on which, on submission of the answers, the entire audit Para's have been dropped by the Public Accounts Committee.

The compliance audit for the period 2010-11 to 2018-19 (upto 31.05.2019) has been carried out by the office of Accountant General, Uttar Pradesh.



ANNEXURES

ANNEXURE-1

CA PLANTATION - RAINY SEASON 2020

(Rupees in Lacs)

S. No.	Division Name	Target				Achievement			
		Ha.	Number of Plants other than ha.	Total No. of Plants	Financial	Ha.	Number of Plants other than ha.	Total No. of Plants	Financial
1	2	3	4	5	6	7	8	9	10
1	Meerut		100	100	0.02		100	100	0.02
2	Gautambuddh Nagar		600	600	19.02		600	600	19.02
3	Siwalik	96.5000		106150	23.30	96.5000		106150	23.30
4	Fatehpur	6.1008		12202	2.84	6.1008		12202	2.84
5	Barabanki	26.0850	1792	18095	162.81	26.0850	1792	18095	162.81
6	Amethi		16648	16648	86.92		16648	16648	86.92
7	SF Pilibhit	1.5764	60	1136	4.88	1.5764	60	1136	4.88
8	Shahjahanpur		100	100	3.17		100	100	3.17
9	Bijnor	303.0000	300	333600	73.21	303.0000	300	333600	73.21
10	Jhansi	4.3850	1360	6184	12.02	4.3850	1360	6184	12.02
11	Chitrakoot	215.7850		237364	84.37	215.7850		237364	84.37
12	Sitapur	18.1501	9604	43267	9.94	18.1501	9604	43267	9.94
13	Hardoi	0.8900		556	0.86	0.8900		556	0.86
14	Raebareli		100	100	0.34		100	100	0.34
15	Avadh	29.0744	9010	67159	73.95	29.0744	9010	67159	70.47
16	Mirzapur	308.1275	8361	347301	186.93	308.1275	8361	347301	186.93
17	Gorakhpur	8.5480	15102	20491	21.13	8.5480	15102	20491	21.13
18	Mainpuri	51.5466	1300	104393	44.74	51.5466	1300	104393	42.00
19	Aligarh	0.3128	2058	2254	11.33	0.3128	2058	2254	10.62
	Total -	1070.0816	66495	1317700	821.78	1070.0816	66495	1317700	814.85



ANNEXURE-2

CA ADVANCE SOIL WORK - RAINY SEASON 2021

(Rupees in Lacs)

S. No.	Division Name	Target				Achievement			
		Ha.	No. of Plants other than ha.	Raising Plants in Nursery	Financial	Ha.	No. of Plants other than ha.	Raising Plants in Nursery	Financial
1	2	3	4	5	6	7	8	9	10
1	Meerut	15.8610	433		8.87	3.6400	433		2.1300
2	Siwalik	59.6860			16.06	59.6860			16.0600
3	Jaunpur	0.8832	500		4.90	0.8832	500		4.9000
4	Ghazipur		100		0.47		100		0.4700
5	Prayagraj	38.9345	470		13.71	38.9345	470		13.7100
6	Fatehpur	50.3849	740		28.18	50.3849	740		28.1800
7	Barabanki	1.6575	3775		2.12	1.6575	3775		2.1200
8	Sultanpur	24.0700	3412		12.24	24.0700	3412		12.2400
9	Amethi			60500	29.87			60500	29.8700
10	Gonda	13.3740	800		8.50	13.3700	800		8.5000
11	Bareilly	6.5101	6650		21.68	6.5100	6650		21.6800
12	Pilibhit	2.2200			0.60	2.2200			0.6000
13	Badaun	0.1394	200		0.64	0.1394	200		0.6400
14	Moradabad		13864		65.31		13864		65.3100
15	Rampur	0.1199	1524		4.02	0.1199	1524		4.0200
16	Jhansi		4456		5.38		4456		5.3800
17	Urai	100.2702	1590		34.64	100.2700	1590		34.6400
18	Chitrakoot	65.7840	600		23.05	65.7840	600		23.0500
19	Banda		810		0.81		810		0.8100
20	Mahoba	1.7900	340		0.92	1.7900	340		0.9200
21	Sitapur	4.8000	50		2.66	4.8000	50		2.6600
22	Unnao	1.0000	6235		6.89	1.0000	6235		6.8900
23	South Kheeri	3.8082	250		1.27	3.8100	250		1.2700
24	Avadh	6.7390	12198		7.75	6.7390	12198		7.7500
25	Kanpur Nagar	37.0406	1373		13.22	37.0406	910		12.7300
26	Kanpur Dehat		656		0.66		656		0.6600
27	Etawah	67.6831	7675		52.45	67.6831	7675		52.4500
28	Obra	4.6290	100		1.68	4.6290	100		1.6800
29	Renukoot	158.0487	100		54.08	158.0490	100		54.0800
30	Agra	15.0000	100		44.52	15.0000	100		44.5200
31	Firozabad	202.0406	1180		113.16	202.0406	1180		113.1600
32	Mainpuri	85.6200			176.47	85.6200			157.0500
33	Hathras	1.4336	740		3.4	1.4336	740		3.4000
34	Kashi Wildlife	0.9656	1691		2.02	0.9656	1691		2.0200
35	Kaimoor Wildlife	52.8000			18.06	52.8000			18.0600
	Total -	1023.2931	72612	60500	780.26	1011.0699	72149	60500	753.61



ANNEXURE-3

MAINTENANCE OF CA PLANTATION DURING YEAR 2020-21

(Rupees in Lacs)

S. No.	Division Name	Target			Achievement		
		Ha.	No. of Plants other than ha.	Financial	Ha.	No. of Plants other than ha.	Financial
1	2	3	4	5	6	7	8
1	Basti	55.4178	27090	12.64	55.4178	27090	12.64
2	Sant Kabirnagar	91.3418	200	4.98	91.3418	200	4.98
3	Siddharthnagar	256.1160	200	12.93	256.1160	200	12.93
4	Azamgarh		284	0.02		284	0.02
5	Mau	1.6100	1513	0.17	1.6100	1513	0.17
6	Ballia	4.0000	1440	4.7400			
7	Meerut	144.4664	26148	20.68	144.4664	26148	20.68
8	Baghpat	49.0554	2820	6.34	49.0554	2820	6.34
9	Bulandshahar	53.1232	19061	13.53	53.1232	19061	13.53
10	Gautambuddh nagar	72.0000	21200	4.20	72.0000	21200	4.20
11	Ghaziabad	13.5158	10809	1.62	13.5158	6931	1.62
12	Hapur		22518	1.78		22518	1.78
13	Saharanpur	7.6100	100	0.12	7.6100	100	0.12
14	Siwalik	2897.9037	2152	181.29	2897.9037	2152	181.29
15	Muzaffarnagar	298.5342	500	17.29	298.5342		17.28
16	Shamli	234.5510		26.21	234.5510		26.21
17	Varanasi		1992	0.51		1892	0.22
18	Jaunpur	59.0900	5656	10.36	59.0900	5656	9.91
19	Ghazipur	2.1017	4455	1.20	2.1017	4455	0.86
20	Prayagraj	609.4933	18205	79.27	609.4933	18205	79.27
21	Kaushambi		4897	0.24		4897	0.24
22	Fatehpur	69.2993	865	4.82	69.2993	865	4.82
23	Pratapgarh		7733	6.85		7733	6.85
24	Ayodhya	16.0312	485	1.02	16.0312	485	1.02
25	Barabanki	195.2732	3727	19.32	195.2732	3727	19.32
26	Sultanpur	15.1250	400	0.92	15.1250	400	0.92
27	Ambedkarnagar	18.1404	345	1.29	18.1404	345	1.29
28	Amethi	256.3640	1300	21.33	256.3640	1300	21.33
29	Gonda	89.7200	590	5.15	89.7200	590	5.15
30	Bahraich	285.7740	342	17.41	285.7740	342	17.41
31	Srawasti	62.9600	1184	3.09	62.9600	1184	3.09
32	Bareilly	74.2905	19882	8.33	74.2905	19882	8.33
33	SF Pilibhit	11.7800	315	1.92	11.7800	315	1.92
34	Pilibhit	66.0720	100	8.88	65.0600		8.87



(Rupees in Lacs)

S. No.	Division Name	Target			Achievement		
		Ha.	No. of Plants other than ha.	Financial	Ha.	No. of Plants other than ha.	Financial
1	2	3	4	5	6	7	8
35	Badaun	351.4520	6874	57.18	351.4520	6874	57.18
36	Shahjahanpur	167.9161	22351	15.56	167.9161	22351	15.56
37	Moradabad	0.6166	32439	6.42	0.6166	32339	6.42
38	Sambhal		4200	0.42		4200	0.42
39	Amroha	28.1700	52799	7.94	28.1700	22557	7.45
40	Bijnor	32.4346		0.46	32.4346		0.46
41	Rampur	286.8670	9046	21.91	286.8670	9046	21.91
42	Najibabad	108.9270		9.85	108.9270		9.85
43	Jhansi	174.8480	44674	16.74	174.8480	44674	16.74
44	Lalitpur	129.9340	30730	7.55	129.9340	30730	7.55
45	Urai	580.2040	4280	78.91	580.2040	4280	78.91
46	Chitrakoot	26.7470	140	0.38	26.7470	140	0.38
47	Banda	25.6600		2.01	25.6600		2.01
48	Mahoba	56.7720	38554	6.61	56.7720	17491	3.80
49	Hamirpur	63.7600	7594	5.89	63.7600	7594	5.89
50	Sitapur	164.9000		18.37	164.9000		18.37
51	Hardoi	408.4670	6924	68.12	408.4670	6924	68.12
52	Raebareli	70.2574	24535	17.91	70.2574	24040	16.22
53	Unnao	140.3830	11002	33.66	140.3830	11002	33.66
54	South Kheeri	111.3964	914	11.03	111.3964	914	11.03
55	Avadh	233.7360	953	32.92	233.7360	953	27.77
56	Kanpur Nagar	66.7705	7642	5.13	66.7705	6214	5.13
57	Kanpur Dehat	99.9244	31592	10.87	99.9244	31592	10.87
58	Farrukhabad	9.2320	100	1.95	9.2320	100	1.95
59	Kannauj	140.5200		16.14	140.5200		16.14
60	Etawah	141.0236	11338	26.00	141.0236	11338	26.00
61	Auraiya	46.8613	11490	18.45	46.8613	11490	18.45
62	Mirzapur	462.7400	890	42.44	433.9854	890	38.19
63	Obra	588.2940		30.71	588.2940		30.71
64	Renukoot	689.2250	650	40.57	689.2250	650	40.57
65	Sonbhadra	9.8800	900	0.31	9.8800	900	0.31
66	Deoria	49.5500	920	0.85	49.5500	920	0.85
67	Gorakhpur		19180	1.41		18183	1.37
68	Kushinagar		26188	1.59		26188	1.59
69	Agra	568.6740	31016	36.41	531.8240	31016	31.05
70	Firozabad	499.1173	50728	32.07	499.1173	50728	32.07
71	Mathura	174.5621	88091	19.76	173.6021	88091	19.76



(Rupees in Lacs)

S. No.	Division Name	Target			Achievement		
		Ha.	No. of Plants other than ha.	Financial	Ha.	No. of Plants other than ha.	Financial
1	2	3	4	5	6	7	8
72	Mainpuri	119.8310	76120	27.57	119.8310	76120	27.57
73	Aligarh	98.4160	9588	7.61	63.1960	9588	4.71
74	Etah	21.4000	1542	1.32	8.7000	1142	0.65
75	Hathras	143.4418	3843	11.05	143.4418	3843	11.05
76	Kasganj	18.9731	846	1.37	18.9731	846	1.37
77	Kashi Wildlife	478.8010	2272	42.53	478.8010	2272	42.53
78	Kaimoor Wildlife	804.6850		47.09	754.6850		44.07
79	Rastriya Chambal Agra	25.5280		1.52	25.5280		1.52
80	Sohelwa Wildlife	44.6500		1.61	36.4000		1.39
81	Sohagibarwa Wildlife	1.2000	1580	0.26	1.2000	1580	0.26
82	North Kheeri		5890	0.74		5890	0.74
	Total -	14477.5081	888923	1347.62	14299.7615	828180	1315.18



ANNEXURE-4

ARTIFICIAL REGENERATION (NON-CA PLANTATION) - RAINY SEASON 2020

(Rupees in Lacs)

S. No.	Division Name	Target			Achievement		
		Physical (ha.)	Total Number of Plants	Financial	Physical (ha.)	Total Number of Plants	Financial
1	2	3	4	5	6	7	8
1	Basti	80.00	88000	19.31	80.00	88000	19.31
2	Sant Kabirnagar	170.00	187000	41.04	170.00	187000	41.04
3	Siddharthnagar	94.00	103400	22.69	94.00	103400	22.69
4	Azamgarh	5.00	10000	2.33	5.00	10000	2.33
5	Mau	22.59	15559	54.24	22.59	15559	54.24
6	Ballia	31.75	3175	58.42	31.75	3175	57.23
7	Bulandshahar	44.50	72850	44.54	44.50	72850	42.90
8	Siwalik	87.00	95700	21.00	87.00	95700	21.00
9	Varanasi	165.50	223500	181.33	165.50	223500	181.33
10	Jaunpur	133.00	120300	110.85	133.00	120300	110.85
11	Prayagraj	248.00	272800	39.93	248.00	272800	39.93
12	Kaushambi	40.00	80000	18.60	40.00	80000	18.60
13	Fatehpur	57.00	114000	26.51	57.00	114000	26.51
14	Pratapgarh	291.00	418200	94.62	291.00	418200	94.62
15	Ayodhya	58.01	96301	48.33	58.01	96301	48.33
16	Barabanki	253.00	506000	117.65	253.00	506000	117.65
17	Sultanpur	8.00	16000	3.72	8.00	16000	3.72
18	Ambedkarnagar	96.52	137752	101.67	96.52	137752	101.67
19	Amethi	148.80	258080	127.54	148.80	258080	127.54
20	Gonda	292.00	331100	72.95	292.00	331100	72.95
21	Bahraich	43.00	47300	10.38	43.00	47300	10.38
22	Srawasti	532.00	585200	128.42	532.00	585200	128.42
23	Bareilly	34.00	37400	8.21	34.00	37400	8.21
24	Badaun	49.00	62750	21.20	49.00	62750	21.20
25	Shahjahanpur	144.00	158400	34.76	144.00	158400	34.76
26	Moradabad	340.00	374000	82.08	340.00	374000	82.08
27	Amroha	156.00	186900	41.46	156.00	186900	41.46
28	Jhansi	394.00	433400	68.25	394.00	433400	68.25
29	Lalitpur	502.00	552200	80.82	502.00	552200	80.82
30	Urai	211.00	232100	38.02	211.00	232100	38.02
31	Chitrakoot	338.00	371800	54.42	338.00	371800	54.42
32	Mahoba	467.00	513700	75.19	467.00	513700	75.19
33	Hamirpur	160.00	176000	28.83	160.00	176000	28.83
34	Sitapur	337.00	575000	132.11	337.00	575000	132.11
35	Hardoi	113.00	226000	52.55	113.00	226000	52.55



(Rupees in Lacs)

S. No.	Division Name	Target			Achievement		
		Physical (ha.)	Total Number of Plants	Financial	Physical (ha.)	Total Number of Plants	Financial
1	2	3	4	5	6	7	8
36	Raebareli	39.00	42900	9.41	39.00	42900	9.41
37	Kanpur Nagar	245.99	370399	293.88	245.99	370399	293.88
38	Kanpur Dehat	474.00	831000	183.39	474.00	831000	183.39
39	Farrukhabad	515.00	701500	157.86	515.00	701500	157.86
40	Kannauj	59.00	118000	27.44	59.00	118000	27.44
41	Etawah	734.00	969400	183.53	734.00	969400	183.53
42	Auraiya	237.00	274200	46.98	237.00	274200	46.98
43	Mirzapur	411.00	452100	66.17	411.00	452100	66.17
44	Obra	136.00	149600	21.90	136.00	149600	21.90
45	Renukoot	174.00	191400	28.01	174.00	191400	28.01
46	Sonbhadra	50.00	55000	8.05	50.00	55000	8.05
47	Gorakhpur	291.00	320100	70.25	291.00	320100	70.25
48	Agra	222.00	244200	40.00	222.00	244200	40.00
49	Firozabad	198.00	217800	35.68	198.00	217800	35.68
50	Mathura	277.00	448700	102.64	277.00	448700	102.64
51	Mainpuri	147.00	294000	68.36	147.00	294000	68.36
52	Hathras	24.00	48000	11.16	24.00	48000	11.16
53	Kasganj	22.00	44000	10.23	22.00	44000	10.23
54	Kashi Wildlife	415.20	451520	83.01	415.20	451520	83.01
55	Kaimoor Wildlife	710.00	781000	114.31	710.00	781000	114.31
56	North Kheeri	48.00	52800	11.59	48.00	52800	11.58
	Total -	11574.86	14739486	3637.82	11574.86	14739486	3634.98



ANNEXURE-5

ADVANCE SOIL WORK FOR NON-CA PLANTATION - YEAR 2021

(Rupees in Lacs)

S. No.	Division Name	Target		Achievement	
		Physical (ha.)	Financial	Physical (ha.)	Financial
1	2	3	4	5	6
1	Basti	100.00	30.60	100.00	30.60
2	Sant Kabirnagar	106.00	31.47	106.00	31.47
3	Siddharthnagar	228.00	65.03	228.00	65.03
4	Azamgarh	110.00	33.29	110.00	33.29
5	Mau	100.00	30.60	100.00	30.60
6	Ballia	80.00	24.48	80.00	21.13
7	Meerut	17.00	10.07	17.00	10.07
8	Bulandshahar	100.00	44.53	100.00	30.55
9	Siwalik	304.00	89.18	304.00	89.18
10	Muzaffarnagar	100.00	30.60	100.00	30.60
11	Shamli	50.00	29.63	50.00	29.63
12	Varanasi	148.00	41.66	148.00	41.66
13	Jaunpur	393.00	146.20	393.00	142.66
14	Ghazipur	198.00	56.96	198.00	42.08
15	Prayagraj	424.00	154.15	424.00	154.15
16	Kaushambi	50.00	29.63	50.00	29.63
17	Fatehpur	50.00	27.04	50.00	27.04
18	Pratapgarh	50.00	15.30	50.00	15.30
19	Ayodhya	371.00	201.41	371.00	201.41
20	Barabanki	414.00	225.31	414.00	225.31
21	Sultanpur	50.00	21.31	50.00	21.31
22	Ambedkarnagar	50.00	14.60	50.00	14.60
23	Amethi	173.00	70.93	173.00	70.93
24	Gonda	485.00	163.63	485.00	163.63
25	Bahraich	300.00	91.80	300.00	91.80
26	Srawasti	950.00	266.65	950.00	266.65
27	Bareilly	165.00	48.09	165.00	48.09
28	SF Pilibhit	5.00	1.53	5.00	1.53
29	Badaun	310.00	148.92	310.00	148.92
30	Shahjahanpur	123.50	35.13	123.50	35.13
31	Moradabad	50.00	15.30	50.00	15.30
32	Sambhal	50.00	15.30	50.00	15.30
33	Amroha	217.00	69.43	217.00	69.43
34	Bijnor	200.00	61.20	200.00	61.20
35	Rampur	50.00	15.30	50.00	15.30
36	Najibabad	200.00	61.20	200.00	61.20
37	Jhansi	739.00	260.43	739.00	260.43



(Rupees in Lacs)

S. No.	Division Name	Target		Achievement	
		Physical (ha.)	Financial	Physical (ha.)	Financial
1	2	3	4	5	6
38	Lalitpur	419.00	148.20	419.00	148.20
39	Urai	727.00	249.31	727.00	249.31
40	Chitrakoot	850.00	300.50	850.00	300.50
41	Banda	272.00	99.32	272.00	99.32
42	Mahoba	560.00	202.02	560.00	202.02
43	Hamirpur	1175.00	397.15	1175.00	397.15
44	Sitapur	100.00	53.53	100.00	53.53
45	Hardoi	123.00	71.95	123.00	71.95
46	Raebareli	100.00	59.26	100.00	59.26
47	Unnao	100.00	59.26	100.00	59.26
48	South Kheeri	100.00	30.60	100.00	30.60
49	Avadh	263.00	149.22	263.00	138.99
50	Kanpur Nagar	200.00	61.20	200.00	61.20
51	Kanpur Dehat	463.00	214.11	463.00	214.11
52	Farrukhabad	300.00	153.00	300.00	153.00
53	Kannauj	120.45	71.38	120.45	71.38
54	Etawah	1800.00	752.07	1800.00	752.07
55	Auraiya	549.00	234.91	549.00	234.91
56	Mirzapur	1093.00	388.51	1093.00	388.51
57	Obra	470.00	170.54	470.00	170.54
58	Renukoot	512.00	184.90	512.00	184.90
59	Sonbhadra	311.00	116.16	311.00	116.16
60	Gorakhpur	600.00	172.50	600.00	172.50
61	Agra	490.00	166.40	490.00	166.40
62	Firozabad	815.00	316.92	815.00	316.92
63	Mathura	40.00	16.26	40.00	16.26
64	Mainpuri	111.00	61.26	111.00	60.78
65	Hathras	25.00	14.82	25.00	14.82
66	Kasganj	85.00	23.61	85.00	23.61
67	Kashi Wildlife	635.00	231.87	635.00	231.87
68	Kaimoor Wildlife	417.00	157.31	417.00	157.31
69	North Kheeri	329.00	99.60	329.00	99.59
	Total -	21664.95	8105.54	21664.95	8059.07



ANNEXURE-6

ARTIFICIAL REGENERATION (NON-CA MAINTENANCE)

(Rupees in Lacs)

S. No.	Division Name	Target		Achievement	
		Physical (ha.)	Financial	Physical (ha.)	Financial
1	2	3	4	5	6
1	Basti	80.00	12.30	80.00	12.30
2	Sant Kabirnagar	40.00	6.15	40.00	6.15
3	Siddharthnagar	238.00	35.28	238.00	35.28
4	Azamgarh	67.00	11.55	67.00	11.55
5	Mau	61.41	18.81	61.41	18.81
6	Ballia	116.50	17.37	116.50	12.76
7	Meerut	50.00	12.17	50.00	12.17
8	Bulandshahar	32.50	11.70	32.50	11.65
9	Siwalik	370.00	55.10	370.00	55.10
10	Shamli	40.00	7.15	40.00	7.15
11	Varanasi	123.50	19.96	123.50	19.96
12	Jaunpur	233.00	40.42	233.00	40.42
13	Ghazipur	71.00	12.42	71.00	10.61
14	Prayagraj	604.13	90.69	604.13	90.69
15	Kaushambi	48.00	6.67	28.00	3.89
16	Fatehpur	155.00	26.04	155.00	26.04
17	Pratapgarh	198.00	30.46	198.00	30.46
18	Ayodhya	721.00	119.77	721.00	119.77
19	Barabanki	587.80	118.17	587.80	118.17
20	Sultanpur	306.00	63.00	306.00	63.00
21	Ambedkarnagar	179.00	30.13	179.00	30.13
22	Amethi	801.00	134.11	801.00	134.11
23	Gonda	470.00	74.80	470.00	74.80
24	Bahraich	834.35	123.72	834.35	123.72
25	Srawasti	860.00	136.10	860.00	136.10
26	Bareilly	277.00	41.70	277.00	41.70
27	Pilibhit	120.00	17.78	120.00	17.78
28	Badaun	221.00	39.78	221.00	39.78
29	Shahjahanpur	509.00	81.92	509.00	81.92
30	Amroha	407.00	69.66	407.00	69.66
31	Bijnor	150.00	34.83	150.00	34.83
32	Rampur	71.00	10.91	71.00	10.91
33	Najibabad	179.00	24.86	179.00	24.86
34	Jhansi	579.00	80.14	579.00	80.14
35	Lalitpur	89.00	12.24	89.00	12.24
36	Urai	298.00	42.12	298.00	42.12



(Rupees in Lacs)

S. No.	Division Name	Target		Achievement	
		Physical (ha.)	Financial	Physical (ha.)	Financial
1	2	3	4	5	6
37	Chitrakoot	745.00	102.71	745.00	102.71
38	Banda	75.00	10.57	75.00	10.57
39	Mahoba	309.00	42.75	309.00	42.75
40	Hamirpur	664.00	93.00	664.00	93.00
41	Sitapur	289.50	54.81	289.50	54.81
42	Hardoi	157.00	29.34	157.00	29.34
43	Raebareli	218.50	36.59	218.50	36.59
44	Unnao	175.60	42.88	175.60	42.88
45	South Kheeri	452.00	64.75	452.00	64.75
46	Avadh	81.40	21.11	81.40	21.11
47	Kanpur Nagar	307.13	57.76	307.13	57.76
48	Kanpur Dehat	537.98	89.60	537.98	89.60
49	Farrukhabad	476.00	84.79	476.00	84.79
50	Kannauj	231.00	42.81	231.00	42.81
51	Etawah	524.00	80.77	524.00	80.77
52	Auraiya	213.00	33.58	213.00	33.58
53	Mirzapur	993.00	137.02	993.00	137.02
54	Obra	259.00	35.69	259.00	35.69
55	Renukoot	376.00	52.34	376.00	52.34
56	Gorakhpur	250.40	38.59	250.40	38.59
57	Agra	373.00	53.33	373.00	53.33
58	Firozabad	332.00	53.88	332.00	53.88
59	Mathura	124.00	21.39	124.00	21.39
60	Mainpuri	448.00	80.85	448.00	80.17
61	Aligarh	308.50	55.19	220.79	38.91
62	Hathras	85.00	15.45	85.00	15.45
63	Kasganj	70.00	11.62	70.00	11.62
64	Kashi Wildlife	844.00	116.56	844.00	116.56
65	Kaimoor Wildlife	282.00	38.80	282.00	38.80
66	North Kheeri	646.50	109.80	646.50	109.14
67	Katarniaghat Wildlife	82.00	12.60	82.00	12.60
	Total -	21116.70	3390.91	21008.99	3364.04



ANNEXURE-7

ANR RELATED WORKS

(Rupees in Lacs)

S. No.	Division Name	Target		Achievement	
		Physical (ha.)	Financial	Physical (ha.)	Financial
1	2	3	4	5	6
1	Siwalik	120.00	14.40	120.00	14.40
2	Gonda	125.00	15.00	125.00	15.00
3	Srawasti	50.00	5.00	50.00	5.00
4	Jhansi	60.00	7.20	60.00	7.20
5	Lalitpur	50.00	6.00	50.00	6.00
6	Chitrakoot	50.00	6.00	50.00	6.00
7	Hamirpur	40.00	4.80	40.00	4.80
8	Mirzapur	50.00	6.00	50.00	6.00
9	Obra	40.00	4.80	40.00	4.80
10	Renukoot	80.00	9.60	80.00	9.60
11	Sonbhadra	30.00	3.60	30.00	3.60
12	Gorakhpur	100.00	12.00	100.00	12.00
13	Kashi Wildlife	35.00	4.20	35.00	4.20
14	Kaimoor Wildlife	40.00	4.80	40.00	4.80
15	North Kheeri	80.00	9.60	80.00	9.60
	Total -	950.00	113.00	950.00	113.00



ANNEXURE-8

SOIL AND MOISTURE CONSERVATION

(Rupees in Lacs)

S. No.	Division Name	Target		Achievement	
		Physical (ha.)	Financial	Physical (ha.)	Financial
1	2	3	4	5	6
1	Jhansi	670.00	100.50	670.00	100.50
2	Lalitpur	1800.00	270.00	1800.00	245.61
3	Urai	800.00	120.00	800.00	120.00
4	Chitrakoot	688.00	103.48	688.00	103.48
5	Banda	365.00	54.93	365.00	54.93
6	Mahoba	400.00	60.17	400.00	60.17
7	Hamirpur	520.00	78.23	520.00	78.23
8	Etawah	1100.00	100.05	1100.00	100.05
	Total -	6343.00	887.36	6343.00	862.97



ANNEXURE-9

SURVEY DEMARCATION AND ESTABLISHMENT OF BOUNDARY PILLARS

(Rupees in Lacs)

S. No.	Division Name	Target		Achievement	
		Physical (Km.)	Financial	Physical (Km.)	Financial
1	2	3	4	5	6
1	Sant Kabirnagar	10.00	0.82	10.00	0.82
2	Siddharthnagar	20.00	1.64	20.00	1.64
3	Prayagraj	50.00	4.10	50.00	4.10
4	Moradabad	14.00	1.15	14.00	1.15
5	Amroha	257.60	21.12	257.60	21.12
6	Bijnor	70.00	5.74	70.00	5.74
7	Jhansi	121.25	9.94	121.25	9.94
8	Lalitpur	466.15	38.22	466.15	38.22
9	Chitrakoot	473.00	38.79	473.00	38.79
10	Mahoba	133.00	10.91	133.00	10.91
11	Hamirpur	145.00	11.89	145.00	11.89
12	Hardoi	110.00	9.02	110.00	9.02
13	Kanpur Dehat	200.00	16.40	200.00	16.40
14	Farrukhabad	40.00	3.28	40.00	3.28
15	Etawah	290.00	23.78	290.00	23.78
16	Mirzapur	155.00	12.71	155.00	12.71
17	Obra	895.60	73.44	895.60	73.44
18	Renukoot	175.00	14.35	175.00	14.35
19	Sonbhadra	123.02	10.09	123.02	10.09
20	Agra	67.00	5.49	67.00	5.49
21	Kashi Wildlife	110.55	9.06	110.55	9.06
22	Kaimoor Wildlife	274.99	22.55	274.99	22.55
23	North Kheeri	76.50	6.27	76.50	6.14
	Total -	4277.66	350.76	4277.66	350.63



ANNEXURE-10

STRENGTHENING OF FOREST ROADS

(Rupees in Lacs)

S. No.	Division Name	Target		Achievement	
		Physical (Km.)	Financial	Physical (Km.)	Financial
1	2	3	4	5	6
1	Siwalik	10.00	15.00	10.00	15.00
2	Prayagraj	7.00	3.15	7.00	3.15
3	Gonda	10.50	14.18	10.50	14.18
4	Srawasti	4.00	10.00	4.00	10.00
5	Pilibhit	75.00	15.00	75.00	15.00
6	Shahjahanpur	9.20	4.97	9.20	4.97
7	Rampur	35.00	1.75	35.00	1.75
8	Najibabad	47.50	14.25	47.50	14.25
9	Lalitpur	18.75	9.37	18.75	9.37
10	Chitrakoot	23.00	9.20	23.00	9.20
11	Mahoba	10.00	5.00	10.00	5.00
12	Hamirpur	80.02	4.00	80.02	4.00
13	Mirzapur	12.00	8.52	12.00	8.52
14	Obra	21.00	10.50	21.00	10.50
15	Renukoot	18.40	9.20	18.40	9.20
16	Gorakhpur	41.72	15.02	41.72	15.02
17	Agra	3.00	6.00	3.00	6.00
18	Kashi Wildlife	26.90	9.68	26.90	9.68
19	Kaimoor Wildlife	27.00	13.50	27.00	13.50
20	North Kheeri	2.70	14.98	2.70	14.98
	Total -	482.69	193.27	482.69	193.27

**ANNEXURE-11**
ENFORCEMENT WORK

(Rupees in Lacs)

S. No.	Division Name	Target		Achievement	
		Physical	Financial	Physical	Financial
1	2	3	4	5	6
1	Sant Kabirnagar	LS	1.50	LS	1.50
2	Siddharthnagar	LS	2.50	LS	2.50
3	Azamgarh	LS	2.50	LS	2.50
4	Mau	LS	2.50	LS	2.50
5	Meerut	LS	5.00	LS	5.00
6	Gautambuddhnagar	LS	5.00	LS	5.00
7	Ghaziabad	LS	5.00	LS	5.00
8	Hapur	LS	5.00	LS	5.00
9	Siwalik	LS	10.00	LS	10.00
10	Muzaffarnagar	LS	5.00	LS	5.00
11	Shamli	LS	2.50	LS	2.50
12	Varanasi	LS	2.50	LS	2.50
13	Jaunpur	LS	2.50	LS	2.50
14	Ghazipur	LS	1.00	LS	1.00
15	Prayagraj	LS	5.00	LS	5.00
16	Ayodhya	LS	2.50	LS	2.50
17	Barabanki	LS	1.50	LS	1.50
18	Ambedkarnagar	LS	2.50	LS	2.50
19	Amethi	LS	2.50	LS	2.50
20	Bahraich	LS	10.00	LS	10.00
21	Srawasti	LS	5.00	LS	5.00
22	Bareilly	LS	2.50	LS	2.50
23	Pilibhit	LS	10.00	LS	10.00
24	Badaun	LS	2.50	LS	2.50
25	Shahjahanpur	LS	5.00	LS	5.00
26	Moradabad	LS	4.00	LS	4.00
27	Amroha	LS	5.00	LS	5.00
28	Bijnor	LS	5.00	LS	5.00
29	Rampur	LS	5.00	LS	5.00
30	Najibabad	LS	5.00	LS	5.00
31	Jhansi	LS	5.00	LS	5.00
32	Hamirpur	LS	5.00	LS	5.00
33	Sitapur	LS	2.50	LS	2.50
34	Hardoi	LS	2.50	LS	2.50
35	Unnao	LS	2.50	LS	2.50
36	South Kheeri	LS	10.00	LS	10.00
37	Avadh	LS	5.00	LS	5.00



(Rupees in Lacs)

S. No.	Division Name	Target		Achievement	
		Physical	Financial	Physical	Financial
1	2	3	4	5	6
38	Kanpur Dehat	LS	2.50	LS	2.50
39	Farrukhabad	LS	2.50	LS	2.50
40	Etawah	LS	2.50	LS	2.50
41	Obra	LS	10.00	LS	10.00
42	Renukoot	LS	10.00	LS	10.00
43	Sonbhadra	LS	5.00	LS	5.00
44	Gorakhpur	LS	13.00	LS	13.00
45	Agra	LS	10.00	LS	10.00
46	Firozabad	LS	2.50	LS	2.50
47	Mainpuri	LS	2.50	LS	2.50
48	Kashi Wildlife	LS	10.00	LS	10.00
49	Kaimoor Wildlife	LS	10.00	LS	10.00
50	Rastriya Chambal Agra	LS	10.00	LS	10.00
51	Sohelwa Wildlife	LS	10.00	LS	10.00
52	Sohagibarwa Wildlife	LS	10.00	LS	10.00
53	North Kheeri	LS	10.00	LS	10.00
54	Dudhwa Tiger Reserve	LS	10.00	LS	10.00
55	Katarniaghat Wildlife	LS	10.00	LS	10.00
	Total -		298.50		298.50



ANNEXURE-12

INSTALLATION AND PURCHASE OF SOLAR LIGHTS/SOLAR LAMP/SOLAR TORCHES IN OFFICE/ RESIDENTIAL/REST HOUSE PREMISES

(Rupees in Lacs)

S. No.	Division Name	Target		Achievement	
		Physical (Nos.)	Financial	Physical (Nos.)	Financial
1	2	3	4	5	6
1	Basti	10	0.180	10	0.180
2	Sant Kabirnagar	6	0.108	6	0.108
3	Siddharthnagar	10	0.180	10	0.180
4	Azamgarh	8	0.144	8	0.144
5	Mau	6	0.108	6	0.108
6	Ballia	6	0.108		
7	Meerut	16	0.288	16	0.288
8	Baghpat	4	0.072	4	0.072
9	Bulandshahar	8	0.144	8	0.144
10	Gautambuddhnagar	4	0.072	4	0.072
11	Ghaziabad	4	0.072	4	0.072
12	Hapur	4	0.072	4	0.072
13	Saharanpur	10	0.180	10	0.180
14	Siwalik	26	2.272	26	2.272
15	Muzaffarnagar	10	0.180	10	0.180
16	Shamli	4	0.072	4	0.072
17	Varanasi	10	0.180	10	0.180
18	Jaunpur	8	0.144		
19	Ghazipur	6	0.108	6	0.108
20	Prayagraj	16	0.288	16	0.288
21	Kaushambi	8	0.144	8	0.144
22	Fatehpur	8	0.144	8	0.144
23	Pratapgarh	8	0.144	8	0.144
24	Ayodhya	8	0.144	8	0.144
25	Barabanki	8	0.144	8	0.144
26	Sultanpur	8	0.144	8	0.144
27	Ambedkarnagar	8	0.144	8	0.144
28	Amethi	8	0.144	8	0.144
29	Gonda	22	2.200	22	2.200
30	Bahraich	22	2.200	22	2.200
31	Srawasti	22	2.200	22	2.200
32	Bareilly	16	0.288	16	0.288
33	SF Pilibhit	26	2.272	26	2.272
34	Pilibhit	136	7.860	136	7.860
35	Badaun	10	0.180	10	0.180



(Rupees in Lacs)

S. No.	Division Name	Target		Achievement	
		Physical (Nos.)	Financial	Physical (Nos.)	Financial
1	2	3	4	5	6
36	Shahjahanpur	34	4.220	34	4.170
37	Moradabad	12	0.216	12	0.216
38	Sambhal	6	0.108	6	0.108
39	Amroha	16	0.288	16	0.288
40	Bijnor	26	2.272	26	2.272
41	Rampur	10	0.180	10	0.180
42	Najibabad	26	2.272	26	2.272
43	Jhansi	20	0.360	20	0.360
44	Lalitpur	20	0.360	20	0.360
45	Urai	12	0.216	12	0.216
46	Chitrakoot	30	0.540	30	0.540
47	Banda	16	0.288	16	0.288
48	Mahoba	10	0.180	10	0.180
49	Hamirpur	10	0.180	10	0.180
50	Sitapur	8	0.144	8	0.144
51	Hardoi	8	0.144	8	0.144
52	Raebareli	8	0.144	8	0.144
53	Unnao	8	0.144	8	0.144
54	South Kheeri	33	3.300	33	3.300
55	Avadh	16	0.288	16	0.288
56	Kanpur Nagar	6	0.108	6	0.108
57	Kanpur Dehat	6	0.108	6	0.108
58	Farrukhabad	8	0.144	8	0.144
59	Kannauj	8	0.144	8	0.144
60	Etawah	8	0.144	8	0.144
61	Auraiya	6	0.108	6	0.108
62	Mirzapur	24	0.432	24	0.432
63	Obra	24	0.432	24	0.432
64	Renukoot	36	0.648	36	0.648
65	Sonbhadra	24	0.432	24	0.432
66	Sant Ravidasnagar	6	0.108	6	0.108
67	Deoria	6	0.108	6	0.108
68	Gorakhpur	16	2.092	16	2.092
69	Kushinagar	8	0.144	8	0.144
70	Agra	20	0.360	20	0.360
71	Firozabad	8	0.144	8	0.144
72	Mathura	14	0.252	14	0.252
73	Mainpuri	8	0.144	8	0.144



(Rupees in Lacs)

S. No.	Division Name	Target		Achievement	
		Physical (Nos.)	Financial	Physical (Nos.)	Financial
1	2	3	4	5	6
74	Aligarh	6	0.108	6	0.108
75	Etah	6	0.108	6	0.108
76	Hathras	6	0.108	6	0.108
77	Kasganj	6	0.108	6	0.108
78	Kashi Wildlife	53	6.368	53	6.368
79	Kaimoor Wildlife	52	5.448	52	5.448
80	Rastriya Chambal Agra	50	3.608	50	3.608
81	Sohelwa Wildlife	78	6.816	78	6.816
82	Sohagibarwa Wildlife	67	6.616	67	6.080
83	North Kheeri	136	7.860	136	7.598
84	Dudhwa Tiger Reserve	141	8.852	141	8.852
85	Katarniaghat Wildlife	137	8.780	137	8.780
	Total -	1797	100.000	1783.00	98.900



ANNEXURE-13

CAPACITY BUILDING OF FRONTLINE STAFF FOR THE PROTECTION OF FORESTS AND PLANTATION

(Rupees in Lacs)

S. No.	Division Name	Target		Achievement	
		Physical	Financial	Physical	Financial
1	2	3	4	5	6
1	Mau	LS	6.00	LS	6.00
2	Meerut	LS	6.00	LS	6.00
3	Pratapgarh	LS	6.00	LS	6.00
4	Mirzapur	LS	6.00	LS	6.00
5	Agra	LS	6.00	LS	6.00
6	CCF, FTI, Kanpur	LS	20.00	LS	20.00
	Total -		50.00		50.00



ANNEXURE-14

**PURCHASE OF STATE OF ART FIRE PROTECTION/
MANAGEMENT EQUIPMENTS**

(Rupees in Lacs)

S. No.	Division Name	Target		Achievement	
		Physical (Nos.)	Financial	Physical (Nos.)	Financial
1	2	3	4	5	6
1	Basti	2	0.037	2	0.037
2	Siddharthnagar	2	0.037	2	0.037
3	Meerut	12	1.385	12	1.385
4	Bulandshahar	4	0.661	4	0.661
5	Gautambuddhnagar	2	0.037	2	0.037
6	Ghaziabad	2	0.037	2	0.037
7	Hapur	2	0.037	2	0.037
8	Saharanpur	3	0.050	3	0.050
9	Siwalik	27	2.864	27	2.864
10	Muzaffarnagar	7	0.722	7	0.722
11	Shamli	1	0.013	1	0.013
12	Varanasi	2	0.037	2	0.037
13	Jaunpur	1	0.024		
14	Prayagraj	16	0.329	16	0.329
15	Fatehpur	3	0.061	3	0.060
16	Pratapgarh	2	0.037	2	0.037
17	Ayodhya	4	0.074	4	0.074
18	Barabanki	7	0.711	7	0.711
19	Sultanpur	3	0.061	3	0.061
20	Amethi	4	0.074	4	0.070
21	Gonda	21	2.166	21	2.166
22	Bahraich	21	2.166	21	2.166
23	Srawasti	26	2.264	26	2.264
24	Bareilly	3	0.050	3	0.050
25	SF Pilibhit	11	1.383	11	1.383
26	Pilibhit	55	6.915	55	6.915
27	Badaun	7	0.722	7	0.722
28	Shahjahanpur	19	2.705	19	2.700
29	Moradabad	2	0.037	2	0.037
30	Amroha	14	1.444	14	1.444
31	Bijnor	21	2.166	21	2.166
32	Rampur	7	0.722	7	0.722
33	Najibabad	27	2.288	27	2.288
34	Jhansi	22	2.766	22	2.766
35	Lalitpur	46	3.276	46	3.276
36	Urai	12	1.396	12	1.396
37	Chitrakoot	51	4.515	51	4.515
38	Banda	12	1.385	12	1.385



(Rupees in Lacs)

S. No.	Division Name	Target		Achievement	
		Physical (Nos.)	Financial	Physical (Nos.)	Financial
1	2	3	4	5	6
39	Mahoba	5	0.674	5	0.674
40	Hamirpur	8	0.746	8	0.746
41	Sitapur	3	0.061	3	0.061
42	Hardoi	1	0.024	1	0.024
43	Raebareli	3	0.061	3	0.061
44	Unnao	2	0.037	2	0.037
45	South Kheeri	34	3.010	34	3.010
46	Avadh	10	1.348	10	1.348
47	Kanpur Dehat	1	0.013	1	0.013
48	Farrukhabad	1	0.024	1	0.024
49	Kannauj	9	0.183	9	0.183
50	Etawah	11	0.220	11	0.220
51	Auraiya	5	0.098	5	0.097
52	Mirzapur	33	2.410	33	2.410
53	Obra	33	2.410	33	2.410
54	Renukoot	50	3.915	50	3.915
55	Sonbhadra	32	1.810	32	1.810
56	Gorakhpur	12	1.396	12	1.396
57	Kushinagar	2	0.037	2	0.037
58	Agra	20	1.566	20	1.566
59	Firozabad	5	0.098	5	0.100
60	Mathura	6	0.698	6	0.698
61	Mainpuri	2	0.037	2	0.037
62	Aligarh	1	0.013	1	0.013
63	Etah	1	0.013	1	0.013
64	Kashi Wildlife	57	2.898	57	2.898
65	Kaimoor Wildlife	48	2.715	48	2.715
66	Rastriya Chambal Agra	32	1.810	32	1.810
67	Sohelwa Wildlife	60	4.698	60	4.698
68	Sohagibarwa Wildlife	58	4.650	58	4.510
69	North Kheeri	64	5.293	64	5.290
70	Dudhwa Tiger Reserve	75	6.687	75	6.687
71	Katarniaghat Wildlife	63	4.693	63	4.693
	Total -	1230	100.000	1229	99.824



ANNEXURE-15

CONSTRUCTION OF WATCH TOWER

(Rupees in Lacs)

S. No.	Division Name	Target		Achievement	
		Physical (Nos.)	Financial	Physical (Nos.)	Financial
1	2	3	4	5	6
1	Ghaziabad	1	4.00	1	4.00
2	Hapur	1	4.00	1	4.00
3	Srawasti	1	5.00	1	5.00
4	Urai	4	48.20	4	48.20
5	Hardoi	1	4.80	1	4.80
6	Avadh	1	3.00	1	3.00
7	Obra	3	18.00	3	18.00
8	Renukoot	3	18.00	3	17.48
9	Agra	1	10.00	1	10.00
10	Kaimoor Wildlife	1	5.00	1	5.00
11	North Kheeri	5	5.00	5	5.00
	Total -	22	125.00	22	124.48



ANNEXURE-16

MAINTENANCE OF WATCH TOWER

(Rupees in Lacs)

S. No.	Division Name	Target		Achievement	
		Physical (Nos.)	Financial	Physical (Nos.)	Financial
1	2	3	4	5	6
1	Hapur	1	2.00	1	2.00
2	Siwalik	5	3.20	4	2.56
3	Srawasti	1	1.00	1	1.00
4	Pilibhit	29	14.50	29	14.50
5	Shahjahanpur	1	1.00	1	1.00
6	Rampur	1	0.15	1	0.15
7	Obra	1	3.00	1	3.00
8	Renukoot	2	2.00	2	2.00
9	Kashi Wildlife	5	5.00	5	5.00
10	Kaimoor Wildlife	2	6.00	2	6.00
11	North Kheeri	4	1.20	4	1.20
	Total -	52	39.05	51	38.41



ANNEXURE-17

MAN-ANIMAL CONFLICT

(Rupees in Lacs)

S. No.	Division Name	Target		Achievement	
		Physical	Financial	Physical	Financial
1	2	3	4	5	6
1	Basti	LS	19.40	LS	19.40
2	Siddharthnagar	LS	7.54	LS	7.54
3	Meerut	LS	8.50	LS	8.50
4	Bulandshahar	LS	17.21	LS	16.97
5	Gautambuddhnagar	LS	10.00	LS	10.00
6	Ghaziabad	LS	7.00	LS	7.00
7	Hapur	LS	12.16	LS	12.16
8	Muzaffarnagar	LS	18.50	LS	18.50
9	Varanasi	LS	10.00	LS	10.00
10	Ghazipur	LS	25.00	LS	24.99
11	Prayagraj	LS	28.50	LS	28.50
12	Fatehpur	LS	3.00	LS	3.00
13	Pratapgarh	LS	5.00	LS	5.00
14	Ayodhya	LS	27.50	LS	27.50
15	Barabanki	LS	26.00	LS	26.00
16	Sultanpur	LS	7.50	LS	7.50
17	Amethi	LS	28.00	LS	28.00
18	Gonda	LS	5.00	LS	5.00
19	Bahraich	LS	47.50	LS	47.50
20	Srawasti	LS	34.00	LS	34.00
21	Bareilly	LS	42.82	LS	42.82
22	SF Pilibhit	LS	8.31	LS	8.31
23	Pilibhit	LS	277.30	LS	277.30
24	Shahjahanpur	LS	8.25	LS	8.25
25	Moradabad	LS	30.59	LS	30.59
26	Sambhal	LS	10.00	LS	10.00
27	Amroha	LS	5.00	LS	5.00
28	Bijnor	LS	40.00	LS	40.00
29	Rampur	LS	18.75	LS	18.75
30	Najibabad	LS	40.00	LS	40.00
31	Chitrakoot	LS	5.00	LS	5.00
32	Sitapur	LS	2.50	LS	2.50
33	South Kheeri	LS	10.00	LS	10.00
34	Avadh	LS	11.57	LS	11.57
35	Kanpur Nagar	LS	5.00	LS	5.00
36	Kanpur Dehat	LS	25.00	LS	25.00
37	Etawah	LS	25.00	LS	25.00



(Rupees in Lacs)

S. No.	Division Name	Target		Achievement	
		Physical	Financial	Physical	Financial
1	2	3	4	5	6
38	Mirzapur	LS	19.00	LS	19.00
39	Renukoot	LS	2.00	LS	2.00
40	Gorakhpur	LS	23.46	LS	23.46
41	Agra	LS	9.00	LS	9.00
42	Mathura	LS	10.00	LS	10.00
43	Mainpuri	LS	5.00	LS	2.60
44	Kasganj	LS	13.45	LS	13.45
45	Kashi Wildlife	LS	41.50	LS	41.50
46	Kaimoor Wildlife	LS	34.22	LS	34.22
47	Rastriya Chambal Agra	LS	36.00	LS	36.00
48	Sohelwa Wildlife	LS	23.50	LS	23.50
49	Sohagibarwa Wildlife	LS	41.43	LS	41.24
50	North Kheeri	LS	50.00	LS	49.45
51	Katarniaghat Wildlife	LS	50.00	LS	50.00
52	CCF, FTI, Kanpur	LS	9.50	LS	9.50
53	Kanpur Zoo	LS	72.60	LS	72.60
54	CF, Endangered Project, Lko	LS	37.29	LS	37.29
	Total -		1390.35		1386.96



ANNEXURE-18

DEVELOPMENT OF DUDHWA,
AMANGARH AND PILIBHIT TIGER RESERVE

(Rupees in Lacs)

S. No.	Division Name	Target		Achievement	
		Physical (Nos.)	Financial	Physical (Nos.)	Financial
1	2	3	4	5	6
1	Pilibhit	LS	125.00	LS	125.00
2	Bijnor	LS	50.00	LS	50.00
3	North Kheeri	LS	75.00	LS	75.00
4	Dudhwa Tiger Reserve	LS	150.00	LS	150.00
5	Katarniaghat Wildlife	LS	100.00	LS	100.00
	Total -		500.00		500.00



ANNEXURE-19

DEVELOPMENT / MAINTENANCE OF KATARNIAGHAT, SOHAGIBARWA, SOHELWA, KAIMOOR, KASHI, KACHHUWA, CHAMBAL AND OTHER WILD LIFE SANCTUARY

(Rupees in Lacs)

S. No.	Division Name	Target		Achievement	
		Physical	Financial	Physical	Financial
1	2	3	4	5	6
1	Meerut	LS	5.50	LS	5.50
2	Hapur	LS	4.50	LS	4.50
3	Muzaffarnagar	LS	3.00	LS	3.00
4	Amroha	LS	3.50	LS	3.50
5	Bijnor	LS	3.50	LS	3.50
6	Kashi Wildlife	LS	30.00	LS	30.00
7	Kaimoor Wildlife	LS	60.00	LS	60.00
8	Rastriya Chambal Agra	LS	40.00	LS	40.00
9	Sohelwa Wildlife	LS	25.00	LS	25.00
10	Sohagibarwa Wildlife	LS	25.00	LS	25.00
	Total -		200.00		200.00



ANNEXURE-20

ESTABLISHMENT OF ANTI-POACHING SURVEILLANCE AND WILDLIFE TRACKING SYSTEM IN DUDHWA TIGER RESERVE

(Rupees in Lacs)

S. No.	Division Name	Target		Achievement	
		Physical	Financial	Physical	Financial
1	2	3	4	5	6
1	Dudhwa Tiger Reserve	LS	75.00	LS	75.00
	Total -		75.00		75.00



ANNEXURE-21

DEVELOPMENT OF BIRD SANCTUARY

(Rupees in Lacs)

S. No.	Division Name	Target		Achievement	
		Physical	Financial	Physical	Financial
1	2	3	4	5	6
1	Sant Kabirnagar	LS	15.38	LS	15.38
2	Gautambuddhnagar	LS	15.44	LS	15.44
3	Aligarh	LS	15.38	LS	15.30
4	Kashi Wildlife	LS	15.38	LS	15.38
5	Kaimoor Wildlife	LS	15.38	LS	15.38
6	Rastriya Chambal Agra	LS	46.14	LS	46.14
7	Sohelwa Wildlife	LS	15.38	LS	15.38
8	CF, Endangered Project, Lko	LS	61.52	LS	61.52
	Total -		200.00		199.92



ANNEXURE-22

WILDLIFE CONSERVATION AND PROTECTION

(Rupees in Lacs)

S. No.	Division Name	Target		Achievement	
		Physical	Financial	Physical	Financial
1	2	3	4	5	6
1	Gonda	LS	1.00	LS	1.00
2	Bahraich	LS	1.50	LS	1.50
3	Srawasti	LS	1.50	LS	1.50
4	Pilibhit	LS	3.00	LS	3.00
5	Bijnor	LS	2.00	LS	2.00
6	Najibabad	LS	1.00	LS	1.00
7	Chitrakoot	LS	1.00	LS	1.00
8	South Kheeri	LS	1.50	LS	1.50
9	Gorakhpur	LS	1.50	LS	1.50
10	Sohelwa Wildlife	LS	2.00	LS	2.00
11	Sohagibarwa Wildlife	LS	2.00	LS	2.00
	Total -		18.00		18.00



ANNEXURE-23

IMMUNIZATION/ VACCINATION OF CATTLE AROUND WILDLIFE
SANCTUARIES/ BIRD SACTUARIES/ NATIONAL PARK

(Rupees in Lacs)

S. No.	Division Name	Target		Achievement	
		Physical	Financial	Physical	Financial
1	2	3	4	5	6
1	Sant Kabirnagar	LS	0.61	LS	0.61
2	Pilibhit	LS	0.61	LS	0.61
3	Bijnor	LS	0.61	LS	0.61
4	Kashi Wildlife	LS	1.83	LS	1.83
5	Kaimoor Wildlife	LS	2.44	LS	2.44
6	Rastriya Chambal Agra	LS	2.44	LS	2.44
7	Sohelwa Wildlife	LS	1.22	LS	1.22
8	Sohagibarwa Wildlife	LS	0.61	LS	0.61
9	North Kheeri	LS	0.61	LS	0.61
10	Dudhwa Tiger Reserve	LS	0.73	LS	0.73
11	Katarniaghat Wildlife	LS	0.61	LS	0.61
12	CF, Endangered Project, Lko	LS	2.44	LS	2.44
	Total -		14.76		14.76



ANNEXURE-24

DEVELOPMENT OF WETLANDS

(Rupees in Lacs)

S. No.	Division Name	Target		Achievement	
		Physical	Financial	Physical	Financial
1	2	3	4	5	6
1	Pilibhit	2	36.68	2	36.68
2	Etawah	1	50.00	1	50.00
3	Auraiya	1	19.73	1	18.21
4	Kasganj	1	40.00	1	40.00
5	Kashi Wildlife	1	44.36	1	44.36
6	North Kheeri	1	54.92	1	54.92
	Total -	7	245.69	7	244.17



ANNEXURE-25

CONSERVATION OF VULTURE, GANGES DOLPHIN, KACCHHUA
(TORTOISE/TURTLE) AND OTHER IMPORTANT SPECIES

(Rupees in Lacs)

S. No.	Division Name	Target		Achievement	
		Physical	Financial	Physical	Financial
1	2	3	4	5	6
1	Gorakhpur	LS	80.24	LS	80.24
2	Rastriya Chambal Agra	LS	9.58	LS	9.58
3	CF, Endangered Project, Lko	LS	10.18	LS	10.18
	Total -		100.00		100.00



ANNEXURE-26

CONSTRUCTION OF TYPE-1, TYPE-2 & TYPE-3 QUARTERS FOR
FRONTLINE STAFF

(Rupees in Lacs)

S. No.	Division Name	Target		Achievement	
		Physical (Nos.)	Financial	Physical (Nos.)	Financial
1	2	3	4	5	6
1	Sant Kabirnagar	2	16.50	2	16.50
2	Siddharthnagar	2	16.50	2	16.50
3	Azamgarh	2	16.50	2	16.50
4	Ghaziabad	2	16.50	2	16.50
5	Hapur	1	14.19	1	14.19
6	Siwalik	9	80.19	9	78.53
7	Prayagraj	2	16.50	2	16.50
8	Kaushambi	1	6.14	1	6.14
9	Ambedkarnagar	3	30.69	3	30.69
10	Amethi	3	18.42	3	18.42
11	Srawasti	6	53.33	6	53.33
12	Bijnor	2	20.72	2	20.72
13	Najibabad	5	47.19	5	47.19
14	Sitapur	3	30.69		
15	Farrukhabad	2	12.28	2	12.28
16	Etawah	7	59.47	7	59.47
17	Auraiya	2	16.50	2	15.49
18	Obra	5	51.02	5	51.02
19	Renukoot	5	43.36	5	39.04
20	Sant Ravidasnagar	3	18.42	3	18.42
21	Gorakhpur	3	22.64	3	22.64
22	Kasganj	4	33.00	4	33.00
23	Kaimoor Wildlife	5	39.14	5	39.14
24	North Kheeri	6	53.33	6	53.33
	Total -	85	733.22	82	695.54



ANNEXURE-27

ESTABLISHMENT OF NURSERIES AT DIVISIONS LEVEL

(Rupees in Lacs)

S. No.	Division Name	Target		Achievement	
		Physical (Nos.)	Financial	Physical (Nos.)	Financial
1	2	3	4	5	6
1	Varanasi	3	13.02	3	13.02
2	Amethi	9	39.06	9	39.06
3	Srawasti	12	52.08	12	52.08
4	Badaun	1	4.34	1	4.34
5	Raebareli	1	4.34	1	4.34
6	Kashi Wildlife	3	13.02	3	13.02
	Total -	29	125.86	29	125.86



ANNEXURE-28

STRENGTHENING OF RESEARCH CENTER FOR PRODUCTION OF
QUALITY PLANTING MATERIAL

(Rupees in Lacs)

S. No.	Division Name	Target		Achievement	
		Physical	Financial	Physical	Financial
1	2	3	4	5	6
1	Silviculturist, Southern Region, Kanpur	LS	90.95	LS	72.67
2	Silviculturist, Saal Region, Bareilly	LS	60.95	LS	60.95
3	Silviculturist, Vindhya Ramnagar, Varanasi	LS	40.60	LS	18.00
	Total -		192.50		151.62



ANNEXURE-29

**PURCHASE AND MAINTENANCE OF EQUIPMENTS/DEVICES FOR
COMMUNICATION AND INFORMATION TECHNOLOGY FOR THE
PURPOSES OF PROTECTION OF FOREST AND WILDLIFE**

(Rupees in Lacs)

S. No.	Division Name	Target		Achievement	
		Physical	Financial	Physical	Financial
1	2	3	4	5	6
1	APCCF, IT	LS	972.59	LS	943.42
	Total -		972.59		943.42



ANNEXURE-30

FOREST CERTIFICATION AND DEVELOPMENT OF CERTIFICATION STANDARDS

(Rupees in Lacs)

S. No.	Division Name	Target		Achievement	
		Physical	Financial	Physical	Financial
1	2	3	4	5	6
1	MD, Forest Corporation, Lucknow	LS	43.50	LS	43.50
	Total -		43.50		43.50



ANNEXURE-31

PUBLICITY-CUM-AWARENESS PROGRAM ON THE VARIOUS SCHEMES
BEING IMPLEMENTED FROM STATE FUND

(Rupees in Lacs)

S. No.	Division Name	Target		Achievement	
		Physical	Financial	Physical	Financial
1	2	3	4	5	6
1	Basti	LS	0.50	LS	0.50
2	Sant Kabirnagar	LS	0.50	LS	0.50
3	Siddharthnagar	LS	0.50	LS	0.50
4	Azamgarh	LS	0.50	LS	0.50
5	Mau	LS	0.50	LS	0.50
6	Ballia	LS	0.50	LS	0.50
7	Meerut	LS	0.67	LS	0.67
8	Baghpat	LS	0.50	LS	0.50
9	Bulandshahar	LS	0.50	LS	0.50
10	Gautambuddhnagar	LS	0.50	LS	0.50
11	Ghaziabad	LS	0.50	LS	0.50
12	Hapur	LS	0.67	LS	0.67
13	Saharanpur	LS	0.50	LS	0.50
14	Siwalik	LS	0.67	LS	0.67
15	Muzaffarnagar	LS	0.67	LS	0.67
16	Shamli	LS	0.50	LS	0.50
17	Varanasi	LS	0.50	LS	0.50
18	Jaunpur	LS	0.50	LS	0.50
19	Ghazipur	LS	0.50	LS	0.50
20	Prayagraj	LS	0.50	LS	0.50
21	Kaushambi	LS	0.50	LS	0.50
22	Fatehpur	LS	0.50	LS	0.50
23	Pratapgarh	LS	0.50	LS	0.50
24	Ayodhya	LS	0.50	LS	0.50
25	Barabanki	LS	0.50	LS	0.50
26	Sultanpur	LS	0.50	LS	0.50
27	Ambedkarnagar	LS	0.50	LS	0.50
28	Amethi	LS	0.50	LS	0.50
29	Gonda	LS	0.50	LS	0.50
30	Bahraich	LS	0.67	LS	0.67
31	Srawasti	LS	0.67	LS	0.67
32	Bareilly	LS	0.67	LS	0.67
33	SF Pilibhit	LS	0.50	LS	0.50
34	Pilibhit	LS	0.80	LS	0.80
35	Badaun	LS	0.50	LS	0.50
36	Shahjahanpur	LS	0.50	LS	0.50



(Rupees in Lacs)

S. No.	Division Name	Target		Achievement	
		Physical	Financial	Physical	Financial
1	2	3	4	5	6
37	Moradabad	LS	0.50	LS	0.50
38	Sambhal	LS	0.50	LS	0.50
39	Amroha	LS	0.67	LS	0.67
40	Bijnor	LS	0.67	LS	0.67
41	Rampur	LS	0.50	LS	0.50
42	Najibabad	LS	0.67	LS	0.67
43	Jhansi	LS	0.67	LS	0.67
44	Lalitpur	LS	0.67	LS	0.67
45	Urai	LS	0.67	LS	0.67
46	Chitrakoot	LS	0.67	LS	0.67
47	Banda	LS	0.67	LS	0.67
48	Mahoba	LS	0.67	LS	0.67
49	Hamirpur	LS	0.67	LS	0.67
50	Sitapur	LS	0.67	LS	0.67
51	Hardoi	LS	0.50	LS	0.50
52	Raebareli	LS	0.50	LS	0.50
53	Unnao	LS	0.50	LS	0.50
54	South Kheeri	LS	0.67	LS	0.67
55	Avadh	LS	0.50	LS	0.50
56	Kanpur Nagar	LS	0.50	LS	0.50
57	Kanpur Dehat	LS	0.50	LS	0.50
58	Farrukhabad	LS	0.50	LS	0.50
59	Kannauj	LS	0.50	LS	0.50
60	Etawah	LS	0.50	LS	0.50
61	Auraiya	LS	0.50	LS	0.50
62	Mirzapur	LS	0.67	LS	0.67
63	Obra	LS	0.67	LS	0.67
64	Renukoot	LS	0.67	LS	0.67
65	Sonbhadra	LS	0.67	LS	0.67
66	Sant Ravidasnagar	LS	0.50	LS	0.50
67	Deoria	LS	0.50	LS	0.50
68	Gorakhpur	LS	0.67	LS	0.67
69	Kushinagar	LS	0.50	LS	0.50
70	Agra	LS	0.50	LS	0.50
71	Firozabad	LS	0.50	LS	0.50
72	Mathura	LS	0.50	LS	0.50
73	Mainpuri	LS	0.50	LS	0.50
74	Aligarh	LS	0.50	LS	0.50



(Rupees in Lacs)

S. No.	Division Name	Target		Achievement	
		Physical	Financial	Physical	Financial
1	2	3	4	5	6
75	Etah	LS	0.50	LS	0.50
76	Hathras	LS	0.50	LS	0.50
77	Kasganj	LS	0.50	LS	0.50
78	Kashi Wildlife	LS	0.89	LS	0.89
79	Kaimoor Wildlife	LS	0.89	LS	0.89
80	Rastriya Chambal Agra	LS	0.89	LS	0.89
81	Sohelwa Wildlife	LS	0.89	LS	0.89
82	Sohagibarwa Wildlife	LS	0.89	LS	0.89
83	North Kheeri	LS	0.89	LS	0.89
84	Dudhwa Tiger Reserve	LS	0.89	LS	0.89
85	Katarniaghat Wildlife	LS	0.89	LS	0.89
	Total -		50.00		50.00





E-green Watch Cell – UP CAMPA, Lucknow



Amroha Division,
Dhanaura Range,
CA Plantation - Year 2020



Kashi Wildlife Division, Varanasi
Chandraprabha Range,
CA Plantation - Year 2020



Shahjahanpur Forest Division
Non CA Plantation 2019

Uttar Pradesh CAMPA Annual Report 2020-21

17, Rana Pratap Marg, Aranya Bhawan,
Lucknow – 226001